

MARCH 2024 HM MANNING SNAPSHOT

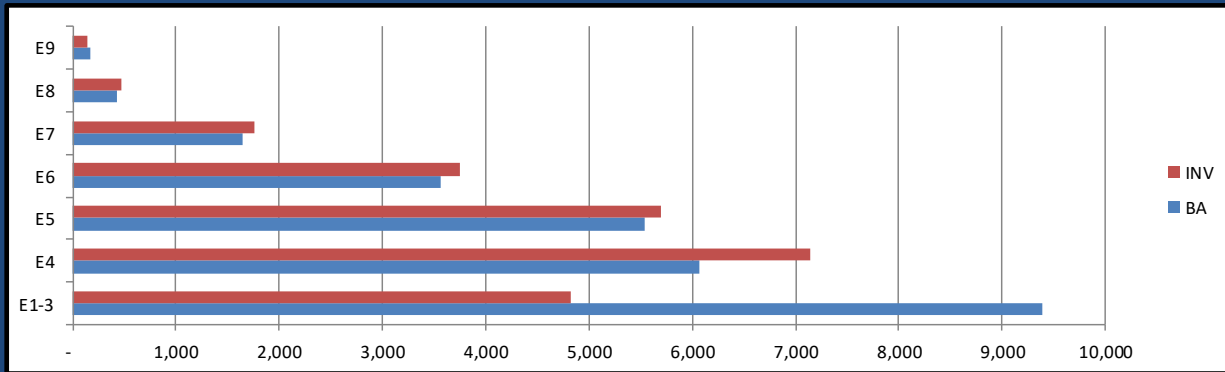
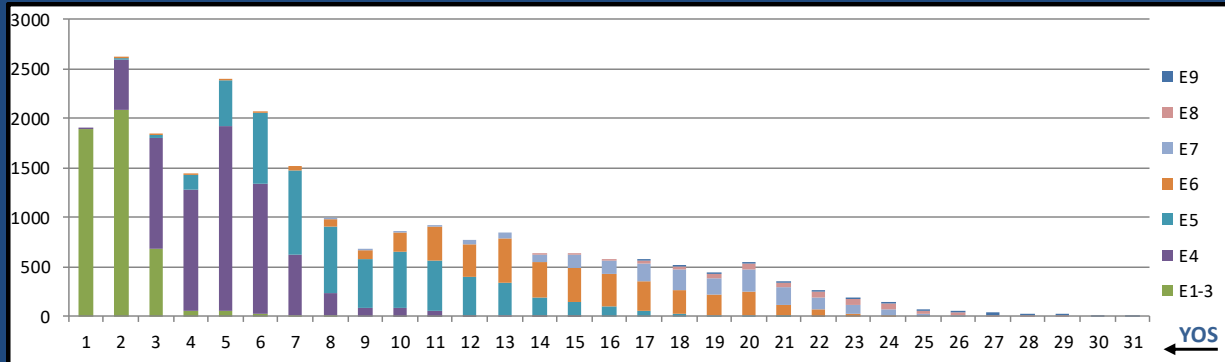
HM NEC MANNING 05 MARCH 2024	NEC	BA	INV WITH PRIMARY NEC	INV/BA PRIMARY NEC	PRODUCTION NOTES	TOTAL INV W/NEC	TOTAL NEC INV/BA
SAR TECH	L00A	183	115	62.8%		117	63.9%
SUB IDC	L01A	202	173	85.6%		173	85.6%
FMF RECON IDC	L02A	273	242	88.6%		242	88.6%
FIELD MED TECH	L03A	5360	6769	126.3%		10673	199.1%
AERO MED TECH	L04A	557	580	104.1%	Train to L00A and L07A	643	115.4%
RAD HEALTH TECH	L05A	91	83	91.2%		83	91.2%
CV TECH	L06A	57	69	121.1%		83	145.6%
AERO PHYS TECH	L07A	85	56	65.9%	30 L04A also have L07A in inventory	93	109.4%
BIOMED EQ TECH	L08A	469	362	77.2%		363	77.4%
NUC MED TECH	L09A	18	25	138.9%		25	138.9%
SURFACE IDC	L10A	1224	983	80.3%		991	81.0%
PREV MED TECH	L12A	680	594	87.4%		595	87.5%
HEMO TECH	L13A	13	14	107.7%		14	107.7%
OPHTH SURG TECH	L14A	11	10	90.9%		10	90.9%
ULTRASOUND TECH	L15A	15	12	80.0%	3 Sailors Carry all L17A/L15A/L16A NECs	15	100.0%
MAMO TECH	L16A	10	8	80.0%	3 Sailors Carry all L17A/L15A/L16A NECs	8	80.0%
ADV X-RAY TECH	L17A	611	487	79.7%	Train to L15A & L16A	512	83.8%
END TECH	L18A	21	18	85.7%		18	85.7%
OPTICIAN	L19A	160	129	80.6%		133	83.1%
PT TECH	L20A	198	204	103.0%		210	106.1%
OT TECH	L21A	13	14	107.7%		14	107.7%
PHARM TECH	L22A	594	490	82.5%		496	83.5%
SURG TECH	L23A	1128	744	66.0%	Train to L14A & L25A	799	70.8%
BEHAV HLTH	L24A	561	488	87.0%		490	87.3%
UROLOGY TECH	L25A	52	59	113.5%		59	113.5%
ORTHOPEDIC TECH	L26A	140	117	83.6%		118	84.3%
DIVE MED TECH	L27A	120	93	77.5%	Train to L28A	98	81.7%
DIVE IDC	L28A	111	82	73.9%		82	73.9%
MORTICIAN	L29A	14	12	85.7%		12	85.7%
HISTO TECH	L30A	30	18	60.0%		18	60.0%
MED LAB TECH	L31A	1091	819	75.1%		819	75.1%
RES THER TECH	L32A	189	167	88.4%		167	88.4%
DENTAL ASSISTANT	L33A	1492	1516	101.6%		1570	105.2%
DENT HYGIENIST	L35A	93	61	65.6%		61	65.6%
DENT LAB BASIC	L36A	91	63	69.2%	Train to L37A	87	95.6%
DENT LAB ADV	L37A	98	84	85.7%		84	85.7%
DENT ORALMAX	L38A	8	7	87.5%		7	87.5%
DRUG & ALCOHOL COUNS. INTERN	810B	54	70	129.6%	Train to 810C 21 OTHER HM NEC'S HAVE THE 810B/810C NEC	89	164.8%
DRUG & ALCOHOL COUNSELOR	810C	106	33	31.1%	21 OTHER HM NEC'S HAVE THE 810B/810C NEC	37	34.9%

		BA	INV	INV/BA
General Duty HM	0000/L03A	15949	14668	92.0%
NECs (less L03A)		10863	9101	83.8%
NOS G000 TOTAL		26812	23769	88.7%

Critically Undermanned <85% Undermanned 85%-94% Healthy 95%-104% Overmanned >105%

MARCH 2024 HM MANNING SNAPSHOT

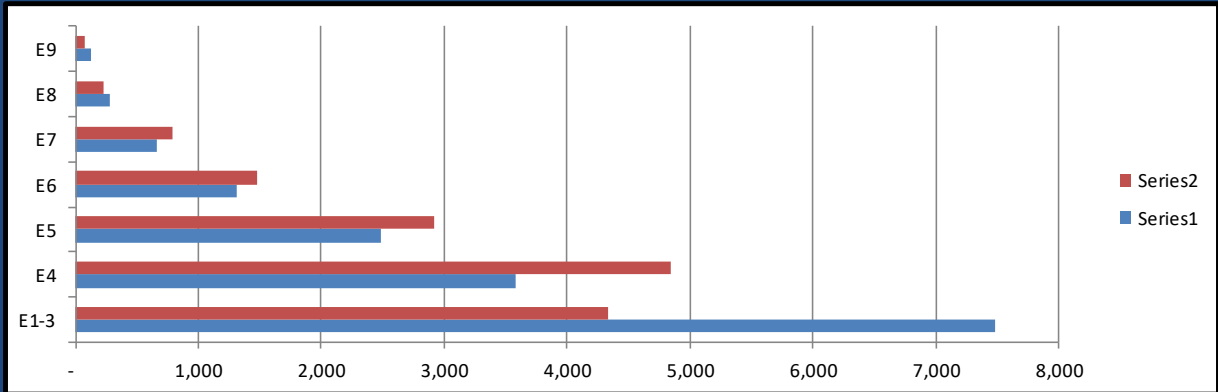
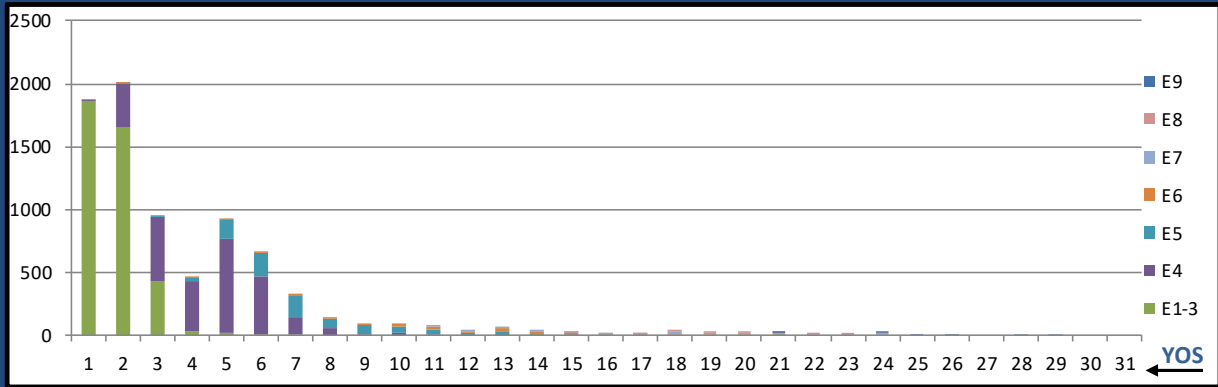
NOS G000-All



	E1-3	E4	E5	E6	E7	E8	E9	Total
%INV to BA	51%	118%	103%	105%	106%	111%	85%	89%
BA	9,395	6,063	5,545	3,570	1,648	426	165	26,812
Total Inventory	4,816	7,141	5,694	3,752	1,753	472	141	23,769
SJA Inventory	77%	104%	106%					

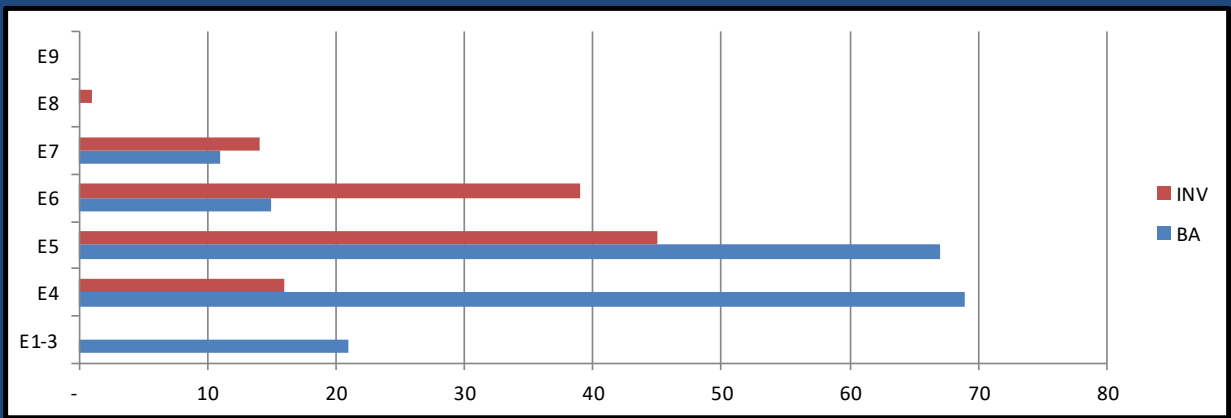
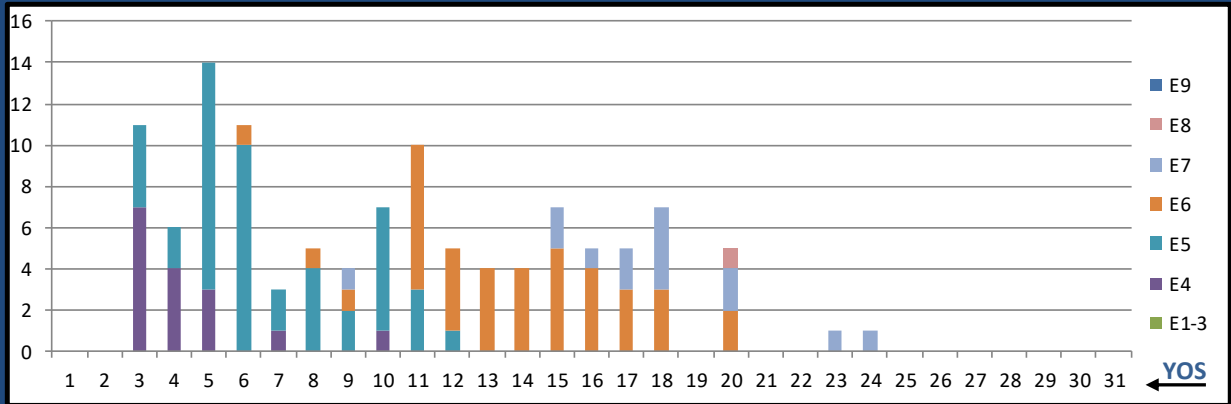
MARCH 2024 HM MANNING SNAPSHOT

G000 GEN DUTY (0000/L03A)



	E1-3	E4	E5	E6	E7	E8	E9	Total
%INV to BA	58%	135%	117%	113%	119%	84%	61%	92%
BA	7,490	3,587	2,490	1,316	661	278	124	15,946
Total Inventory	4,333	4,844	2,916	1,481	785	233	76	14,668
SJA Inventory	83%		116%		103%			

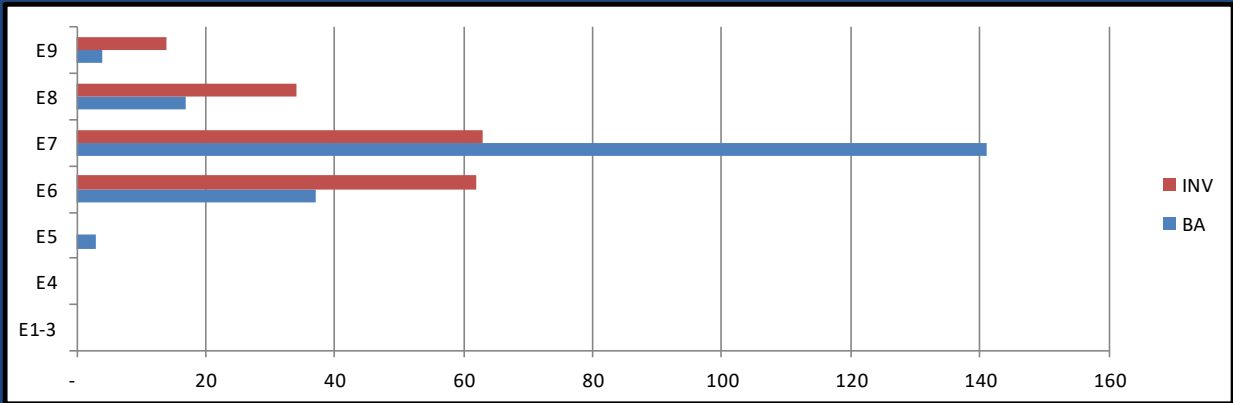
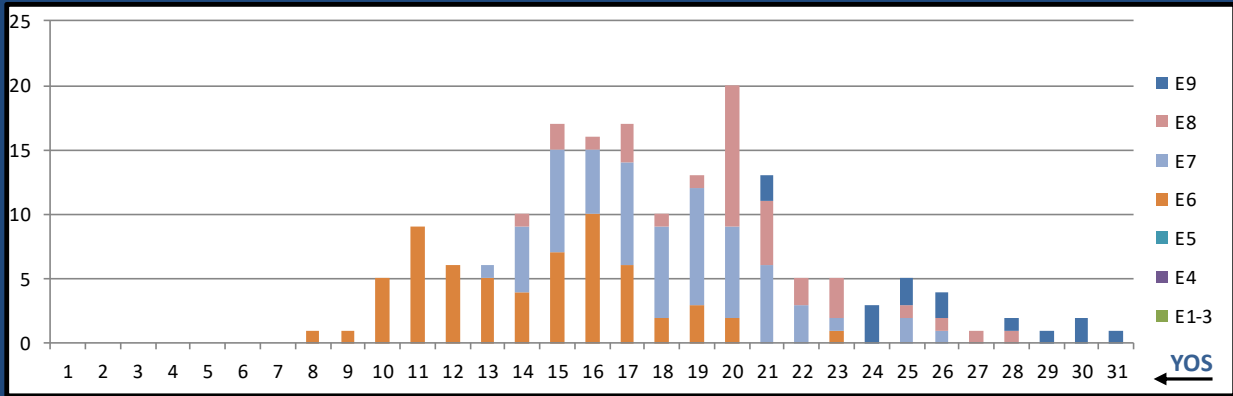
LOOA SAR TECH



	E1-3	E4	E5	E6	E7	E8	E9	Total
%INV to BA	0%	23%	67%	260%	127%	0%	0%	63%
BA	21	69	67	15	11	-	-	183
Total Inventory	-	16	45	39	14	1	-	115
SJA Inventory	18%		102%			136%		

MARCH 2024 HM MANNING SNAPSHOT

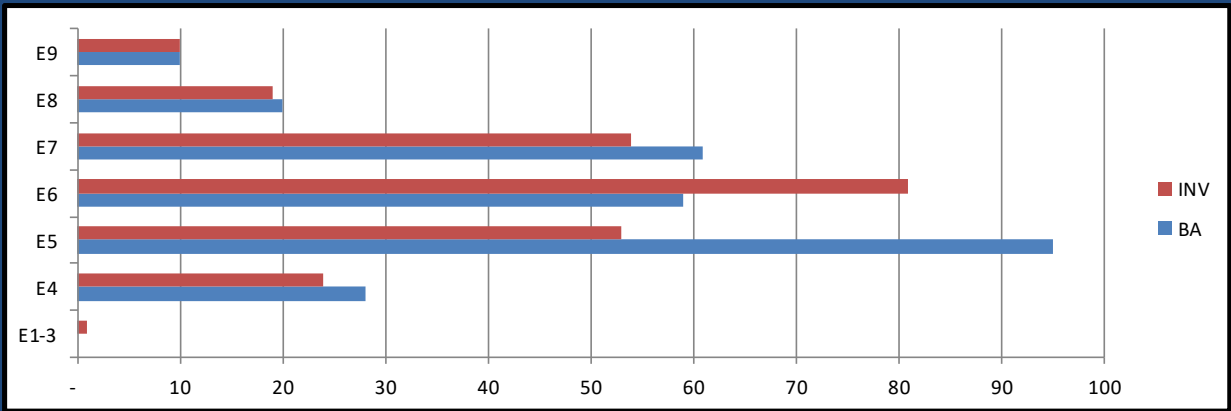
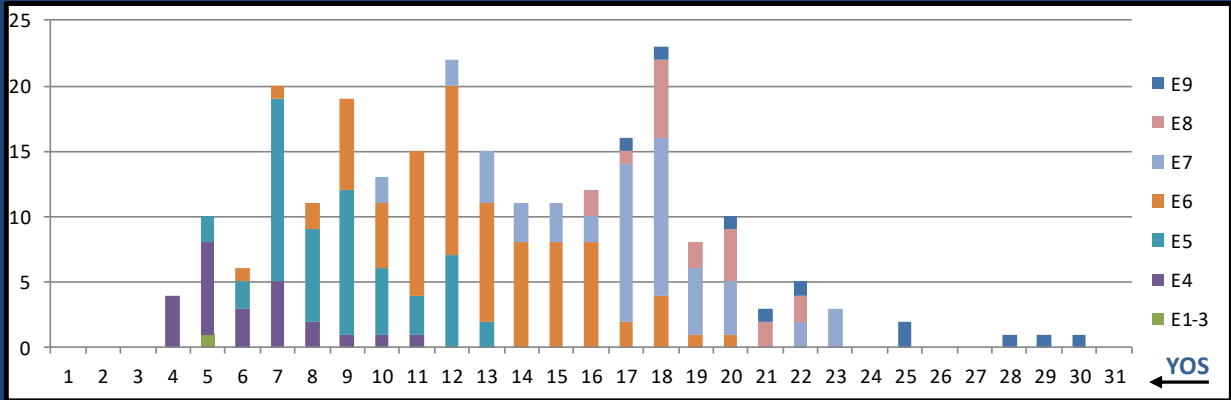
L01A SUB FORCE IDC



	E1-3	E4	E5	E6	E7	E8	E9	Total
%INV to BA	0%	0%	0%	168%	45%	200%	350%	86%
BA	-	-	3	37	141	17	4	202
Total Inventory	-	-	-	62	63	34	14	173
SJA Inventory	#DIV/0!		155%		69%			

MARCH 2024 HM MANNING SNAPSHOT

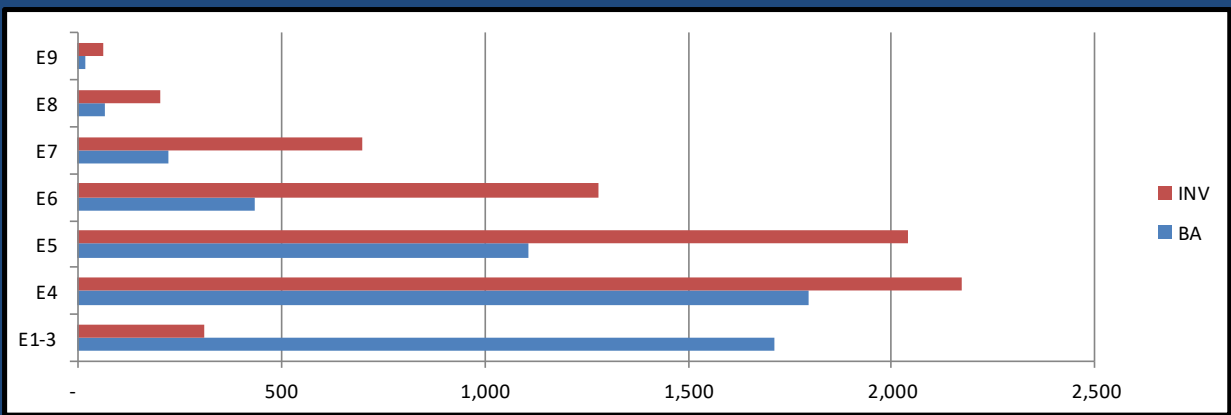
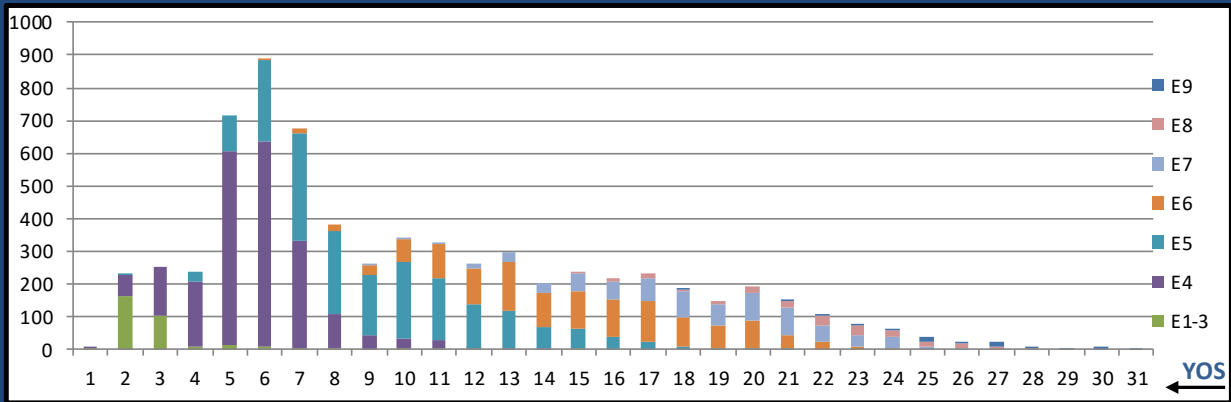
L02A FMF RECON IDC



	E1-3	E4	E5	E6	E7	E8	E9	Total
%INV to BA	0%	86%	56%	137%	89%	95%	100%	89%
BA	-	28	95	59	61	20	10	273
Total Inventory	1	24	53	81	54	19	10	242
SJA Inventory	89%	87%		91%				

MARCH 2024 HM MANNING SNAPSHOT

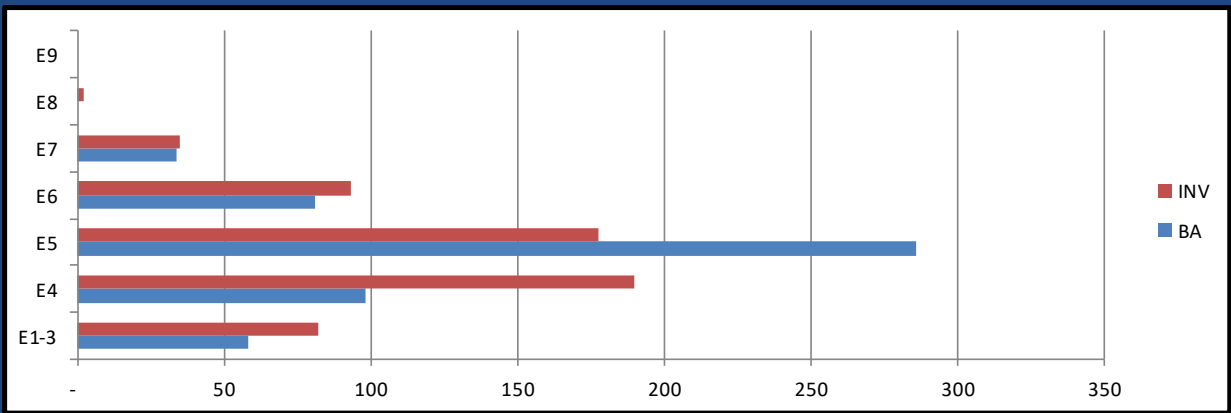
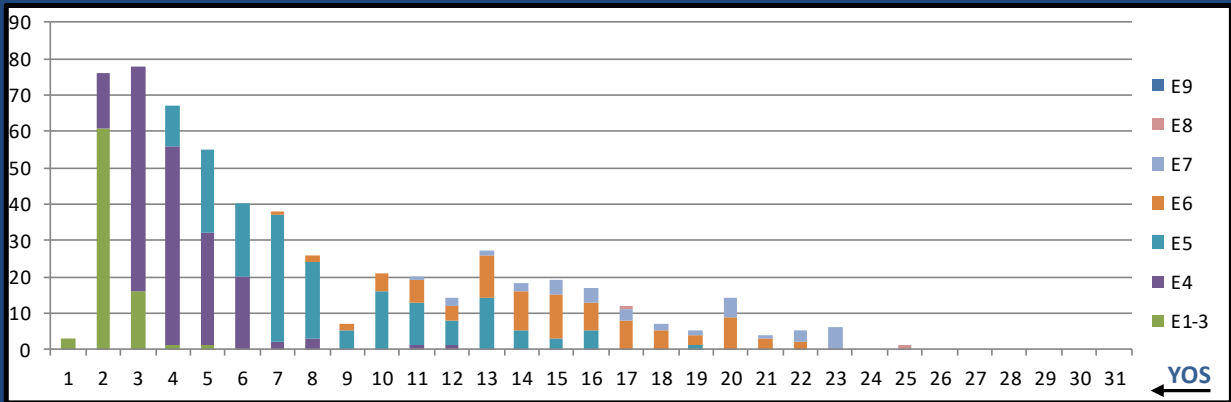
L03A FLD MED TECH



	E1-3	E4	E5	E6	E7	E8	E9	Total
%INV to BA	18%	121%	184%	293%	311%	301%	342%	126%
BA	1,711	1,796	1,106	436	225	67	19	5,360
Total Inventory	311	2,173	2,040	1,279	699	202	65	6,769
SJA Inventory	71%		215%		311%			

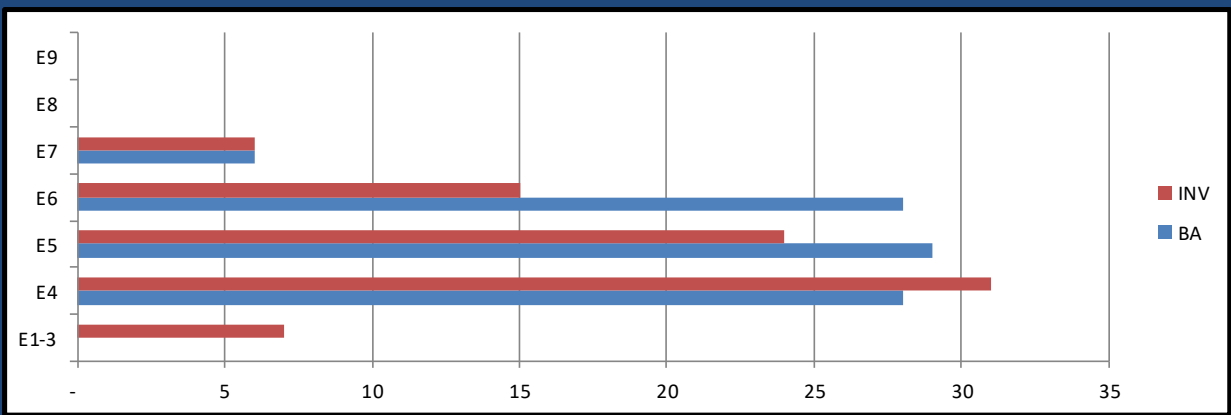
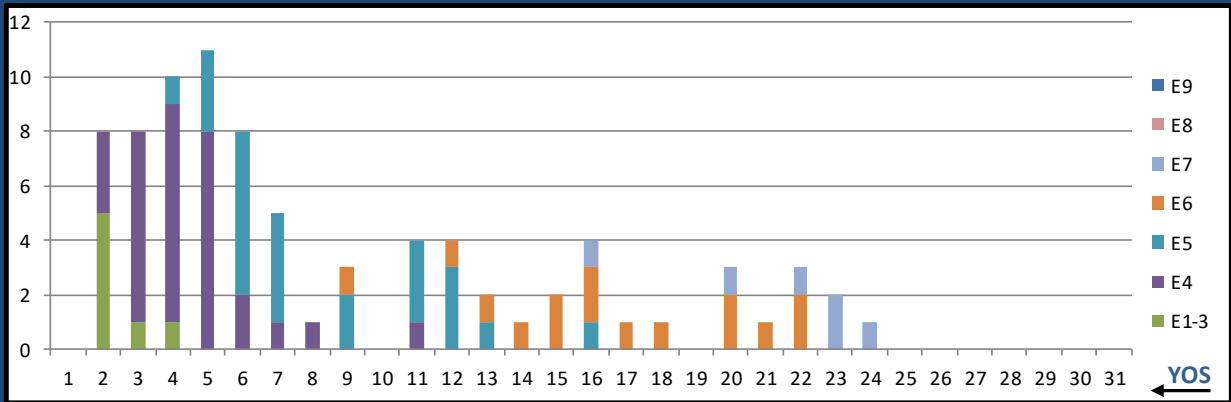
MARCH 2024 HM MANNING SNAPSHOT

L04A AERO MED TECH



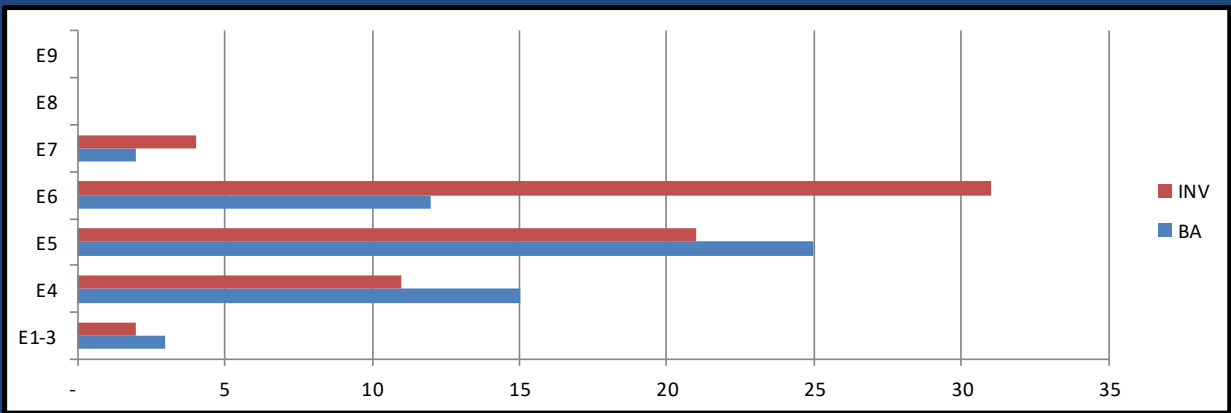
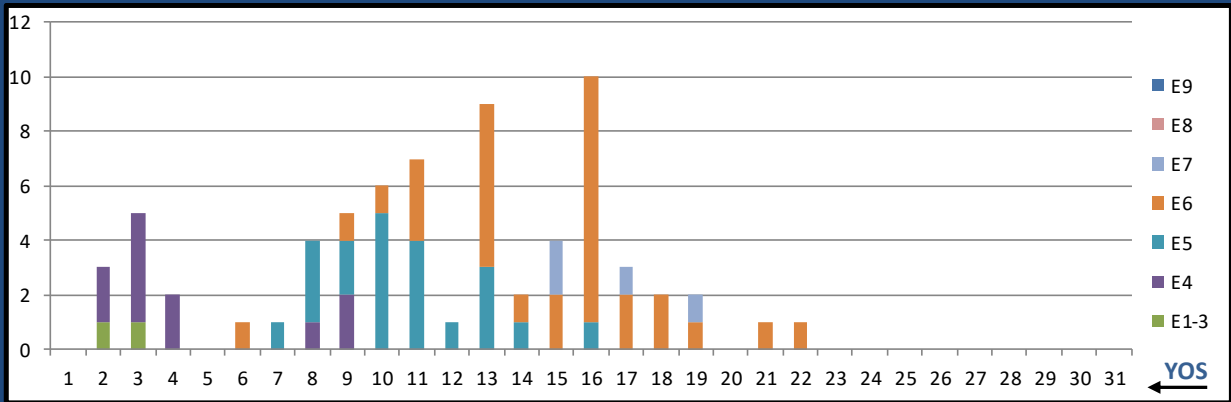
	E1-3	E4	E5	E6	E7	E8	E9	Total
%INV to BA	141%	194%	62%	115%	103%	0%	0%	104%
BA	58	98	286	81	34	-	-	557
Total Inventory	82	190	178	93	35	2	-	580
SJA Inventory	174%		74%			109%		

L05A RAD HLTH TECH



	E1-3	E4	E5	E6	E7	E8	E9	Total
%INV to BA	0%	111%	83%	54%	100%	0%	0%	91%
BA	-	28	29	28	6	-	-	91
Total Inventory	7	31	24	15	6	-	-	83
SJA Inventory	136%		68%		100%			

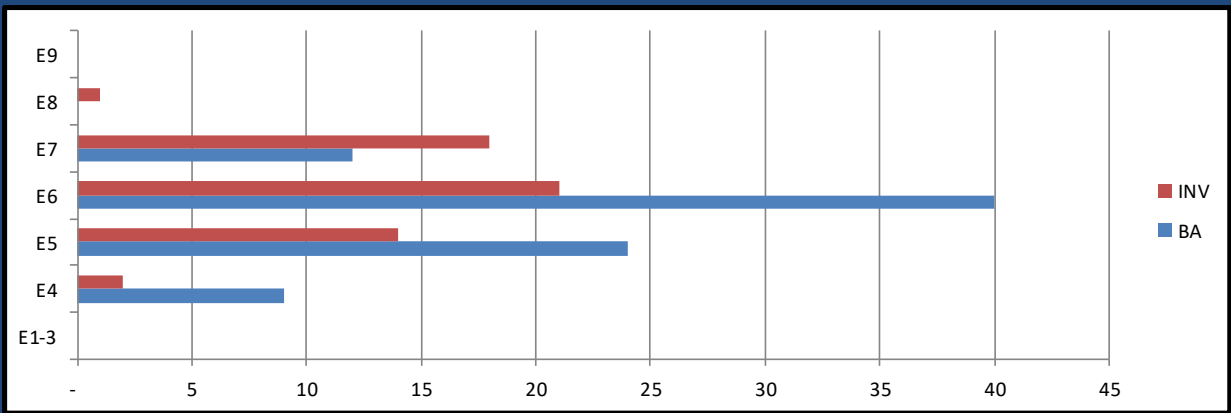
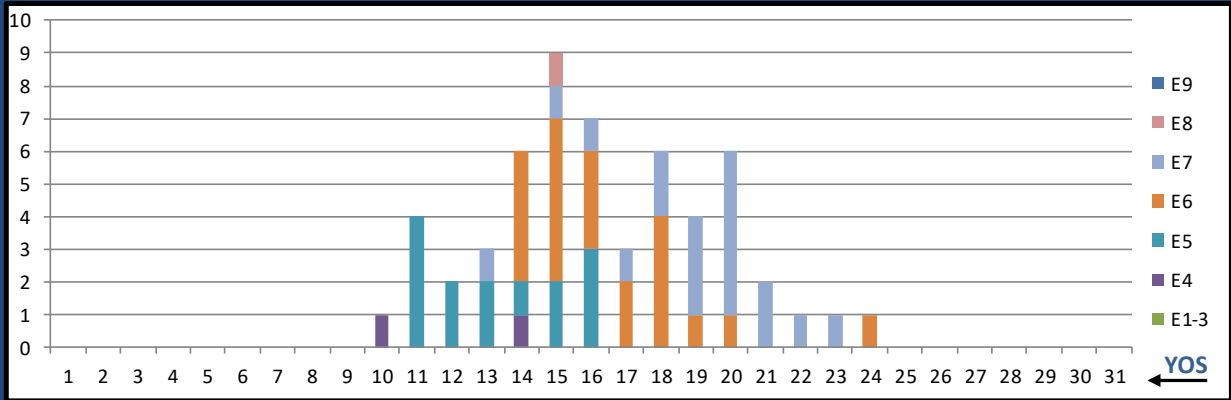
L06A CV TECH



	E1-3	E4	E5	E6	E7	E8	E9	Total
%INV to BA	67%	73%	84%	258%	200%	0%	0%	121%
BA	3	15	25	12	2	-	-	57
Total Inventory	2	11	21	31	4	-	-	69
SJA Inventory	72%		141%		200%			

MARCH 2024 HM MANNING SNAPSHOT

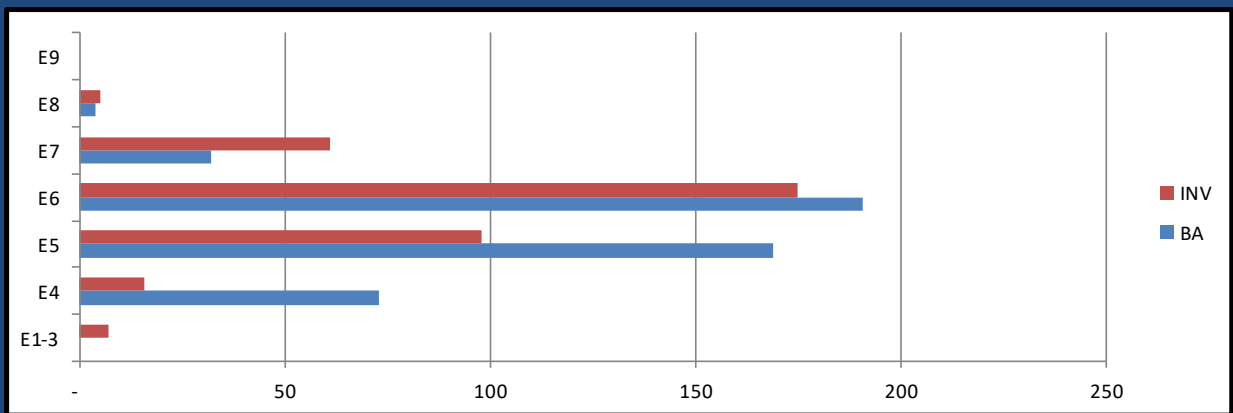
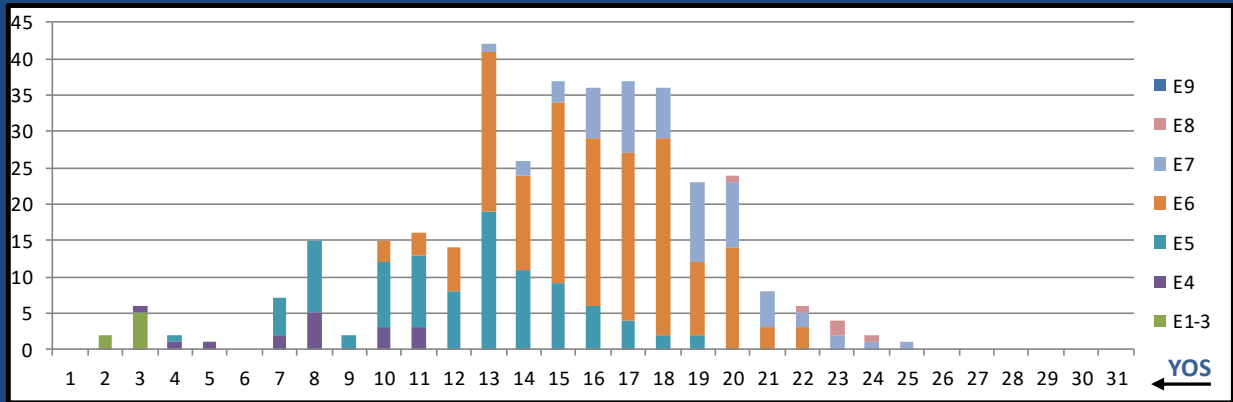
L07A AERO PHYS TECH



	E1-3	E4	E5	E6	E7	E8	E9	Total
%INV to BA	0%	22%	58%	53%	150%	0%	0%	66%
BA	-	9	24	40	12	-	-	85
Total Inventory	-	2	14	21	18	1	-	56
SJA Inventory	22%		55%		158%			

MARCH 2024 HM MANNING SNAPSHOT

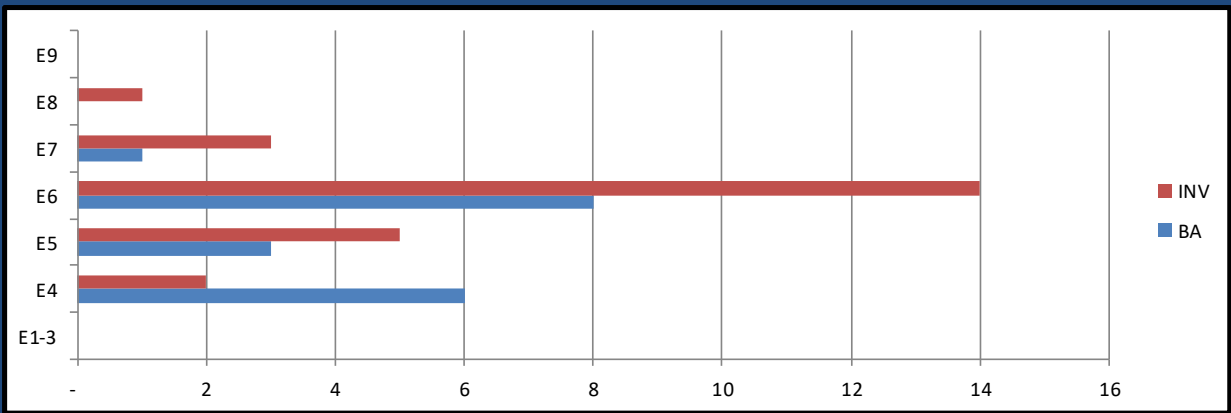
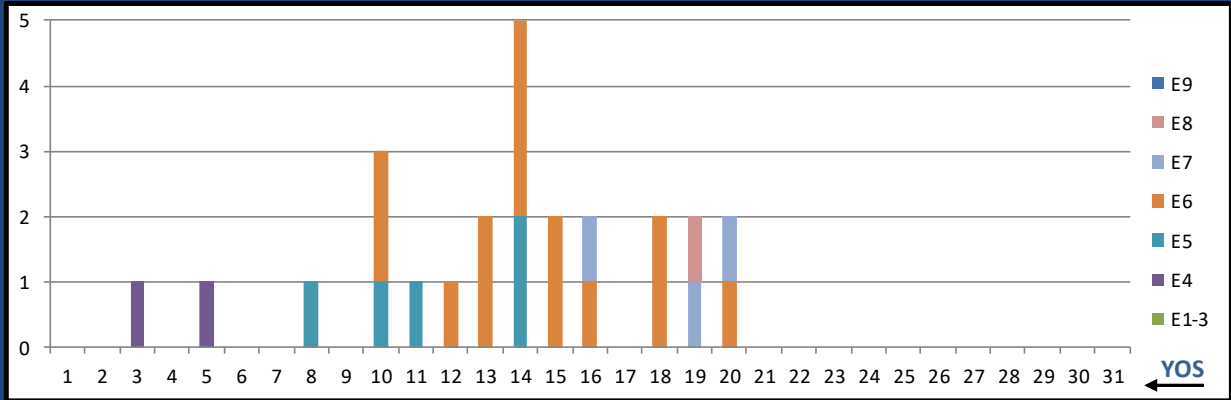
L08A BIOMED EQ TECH



	E1-3	E4	E5	E6	E7	E8	E9	Total
%INV to BA	0%	22%	58%	92%	191%	125%	0%	77%
BA	-	73	169	191	32	4	-	469
Total Inventory	7	16	98	175	61	5	-	362
SJA Inventory	32%		76%		183%			

MARCH 2024 HM MANNING SNAPSHOT

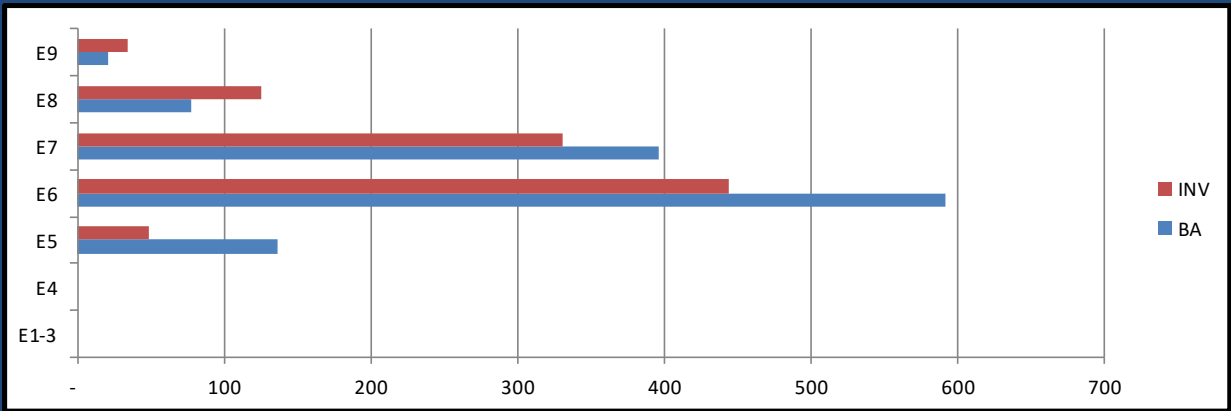
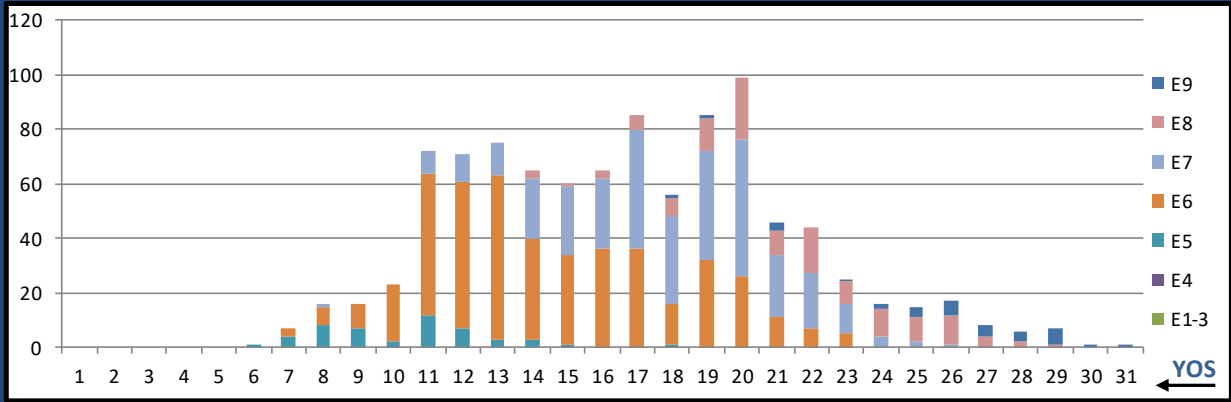
L09A NUC MED TECH



	E1-3	E4	E5	E6	E7	E8	E9	Total
%INV to BA	0%	33%	167%	175%	300%	0%	0%	139%
BA	-	6	3	8	1	-	-	18
Total Inventory	-	2	5	14	3	1	-	25
SJA Inventory	33%		173%		400%			

MARCH 2024 HM MANNING SNAPSHOT

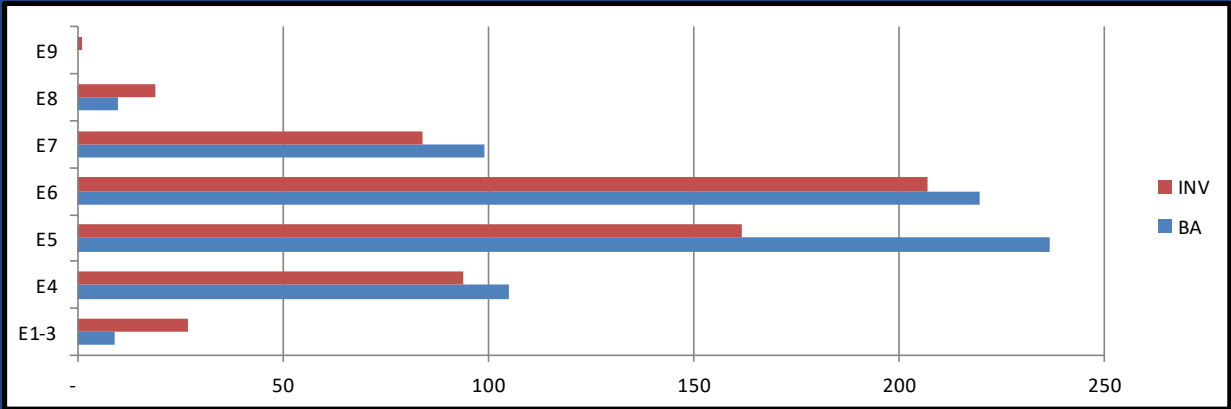
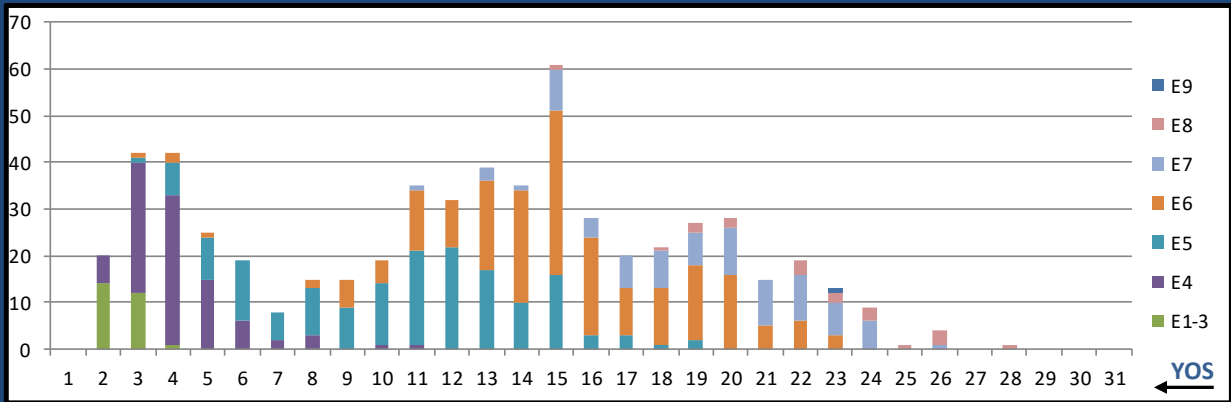
L10A SURFACE FORCE IDC



	E1-3	E4	E5	E6	E7	E8	E9	Total
%INV to BA	0%	0%	36%	75%	83%	160%	162%	80%
BA	-	-	136	592	397	78	21	1,224
Total Inventory	-	-	49	444	331	125	34	983
SJA Inventory	#DIV/0!		68%		99%			

MARCH 2024 HM MANNING SNAPSHOT

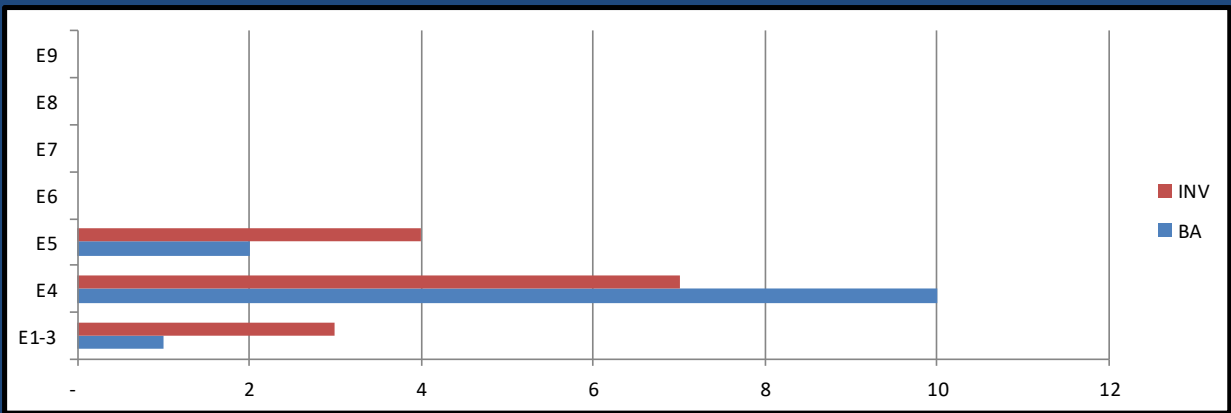
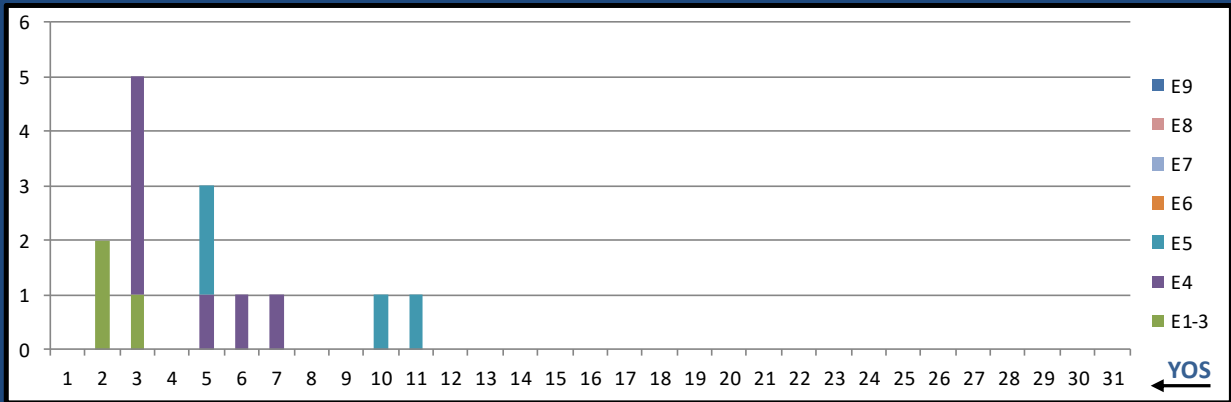
L12A PREV MED TECH



	E1-3	E4	E5	E6	E7	E8	E9	Total
%INV to BA	300%	90%	68%	94%	85%	190%	0%	87%
BA	9	105	237	220	99	10	-	680
Total Inventory	27	94	162	207	84	19	1	594
SJA Inventory	106%		81%		95%			

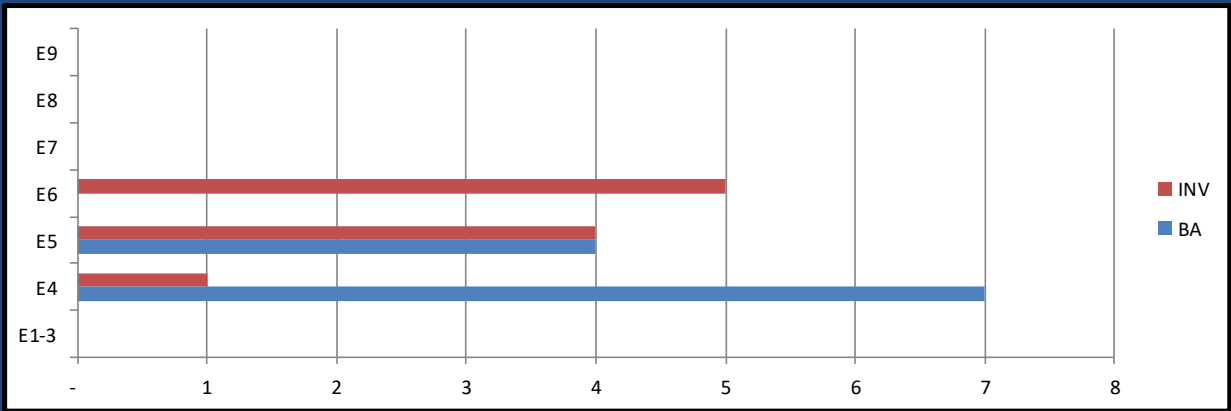
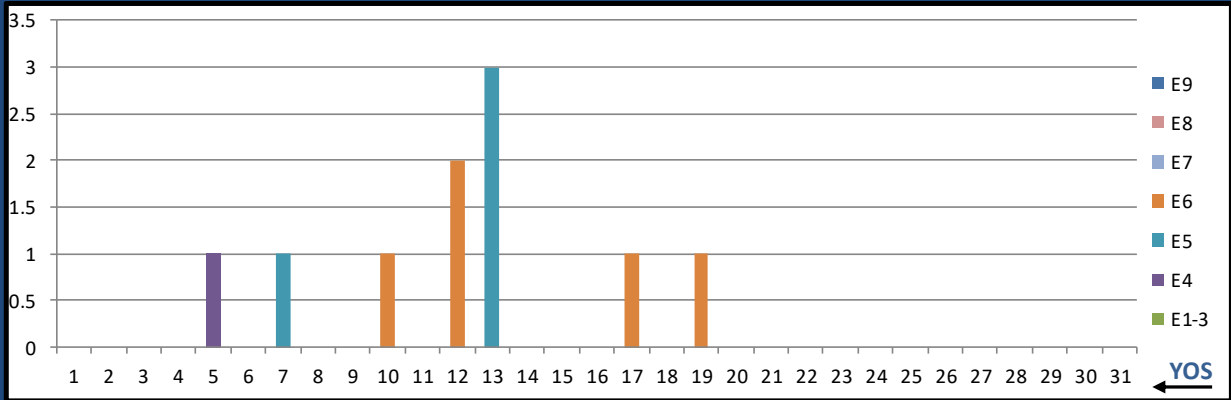
MARCH 2024 HM MANNING SNAPSHOT

L13A HEMO TECH



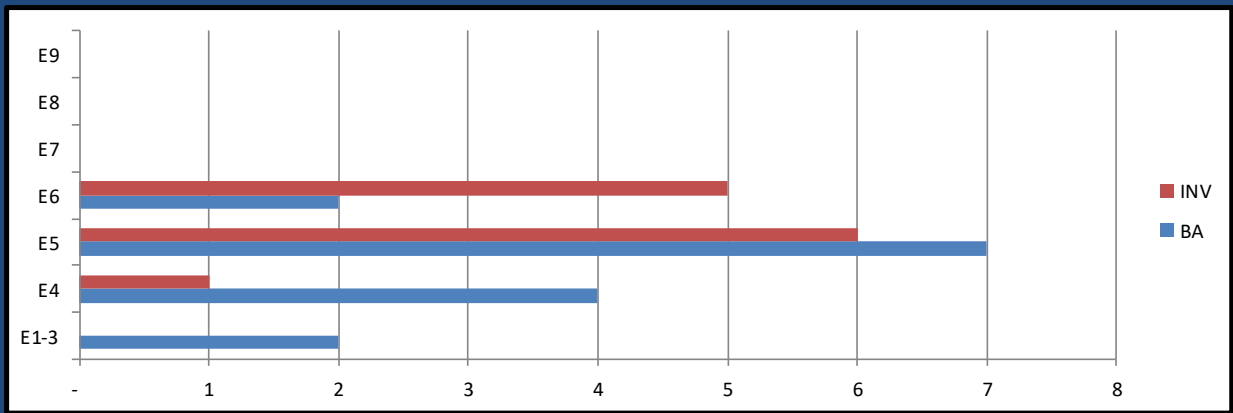
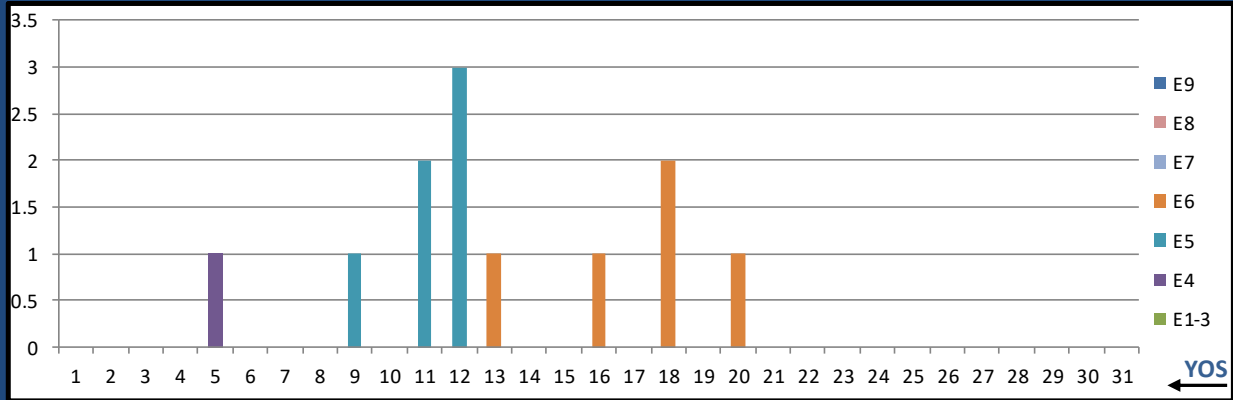
	E1-3	E4	E5	E6	E7	E8	E9	Total
%INV to BA	300%	70%	200%	0%	0%	0%	0%	108%
BA	1	10	2	-	-	-	-	13
Total Inventory	3	7	4	-	-	-	-	14
SJA Inventory	91%		200%			#DIV/0!		

L14A OPTH SURG TECH



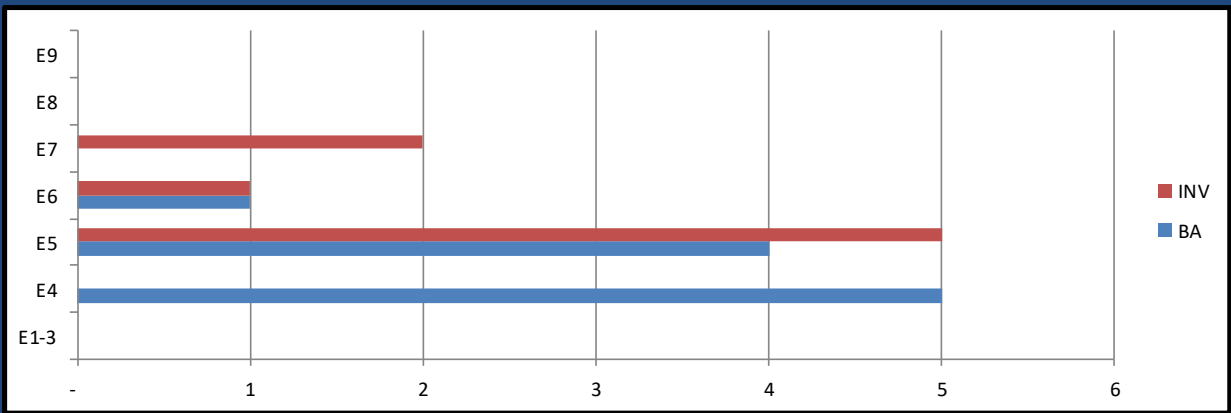
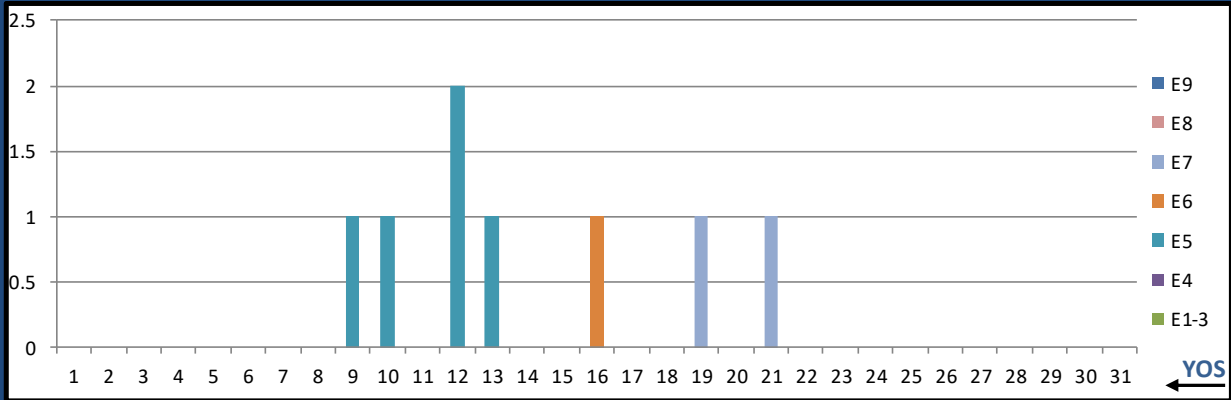
	E1-3	E4	E5	E6	E7	E8	E9	Total
%INV to BA	0%	14%	100%	0%	0%	0%	0%	91%
BA	-	7	4	-	-	-	-	11
Total Inventory	-	1	4	5	-	-	-	10
SJA Inventory	14%		225%		#DIV/0!			

L15A ULTRASOUND TECH



	E1-3	E4	E5	E6	E7	E8	E9	Total
%INV to BA	0%	25%	86%	250%	0%	0%	0%	80%
BA	2	4	7	2	-	-	-	15
Total Inventory	-	1	6	5	-	-	-	12
SJA Inventory	17%		122%			#DIV/0!		

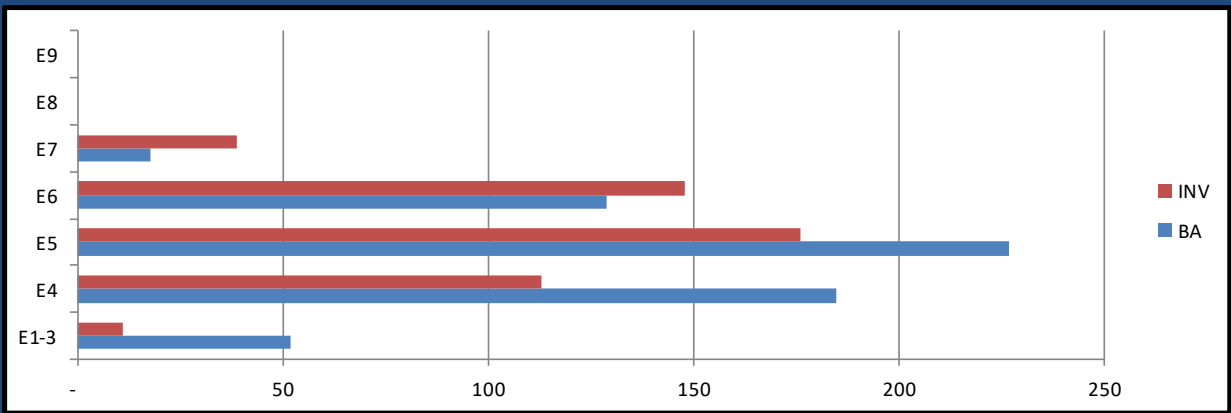
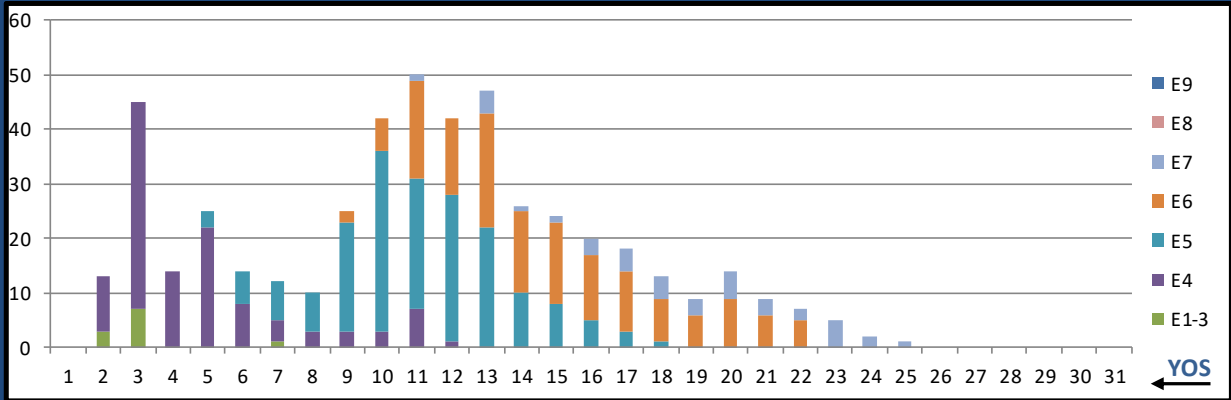
L16A MAMMO TECH



	E1-3	E4	E5	E6	E7	E8	E9	Total
%INV to BA	0%	0%	125%	100%	0%	0%	0%	80%
BA	-	5	4	1	-	-	-	10
Total Inventory	-	-	5	1	2	-	-	8
SJA Inventory	0%		120%		#DIV/0!			

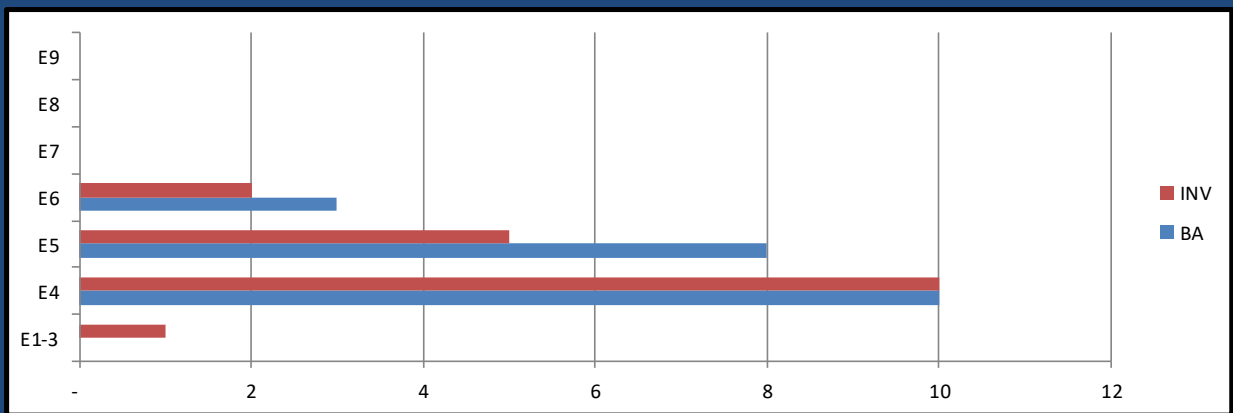
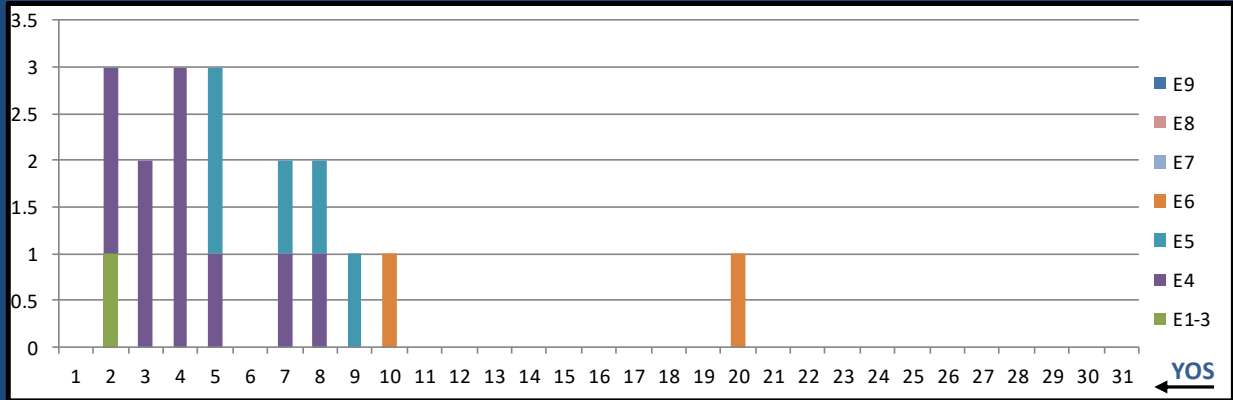
MARCH 2024 HM MANNING SNAPSHOT

L17A ADV X-RAY TECH



	E1-3	E4	E5	E6	E7	E8	E9	Total
%INV to BA	21%	61%	78%	115%	217%	0%	0%	80%
BA	52	185	227	129	18	-	-	611
Total Inventory	11	113	176	148	39	-	-	487
SJA Inventory	52%		91%		217%			

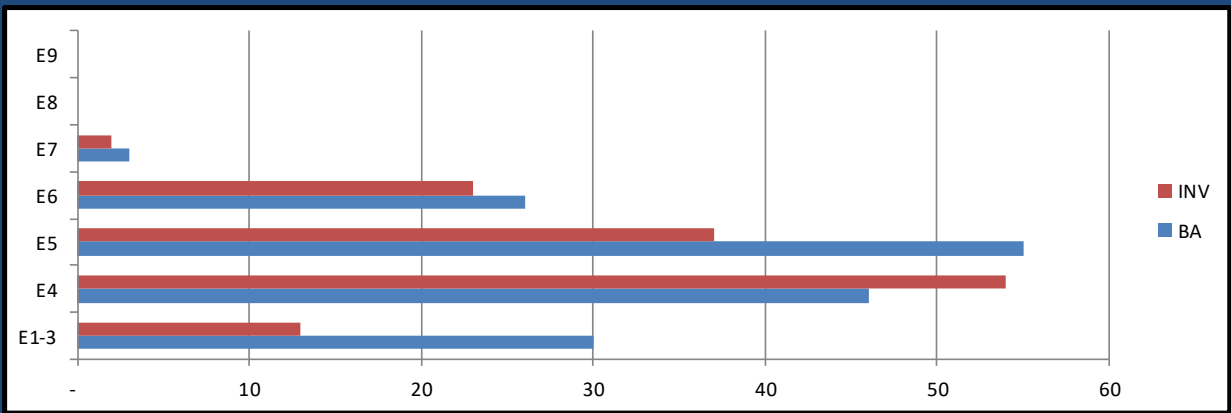
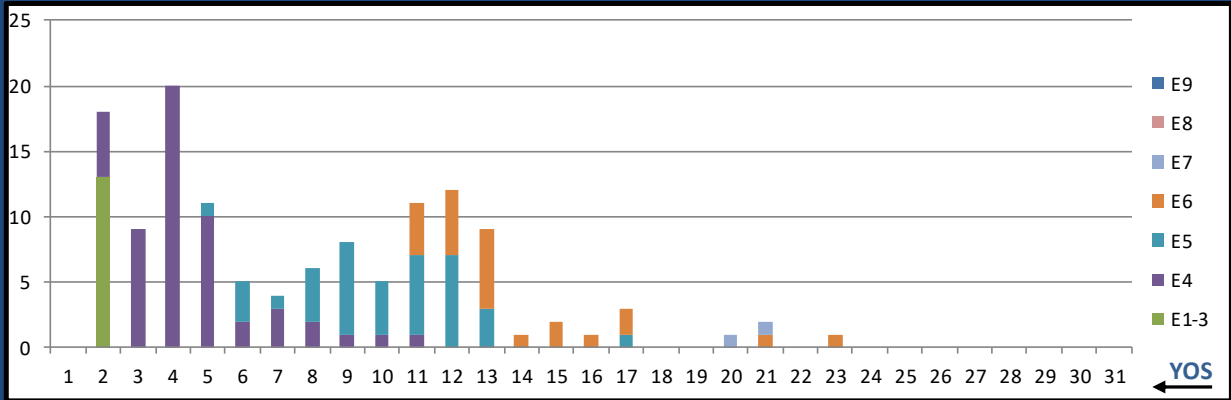
L18A END TECH



	E1-3	E4	E5	E6	E7	E8	E9	Total
%INV to BA	0%	100%	63%	67%	0%	0%	0%	86%
BA	-	10	8	3	-	-	-	21
Total Inventory	1	10	5	2	-	-	-	18
SJA Inventory	110%		64%			#DIV/0!		

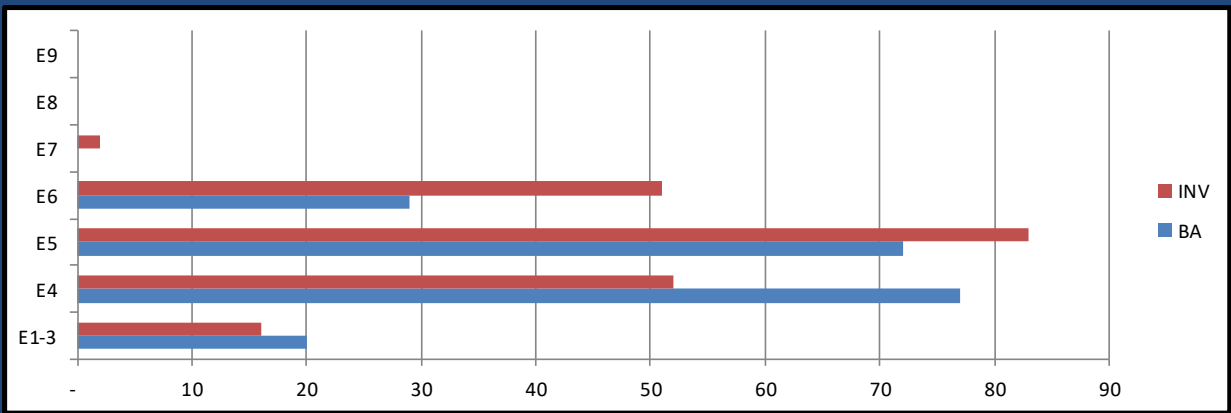
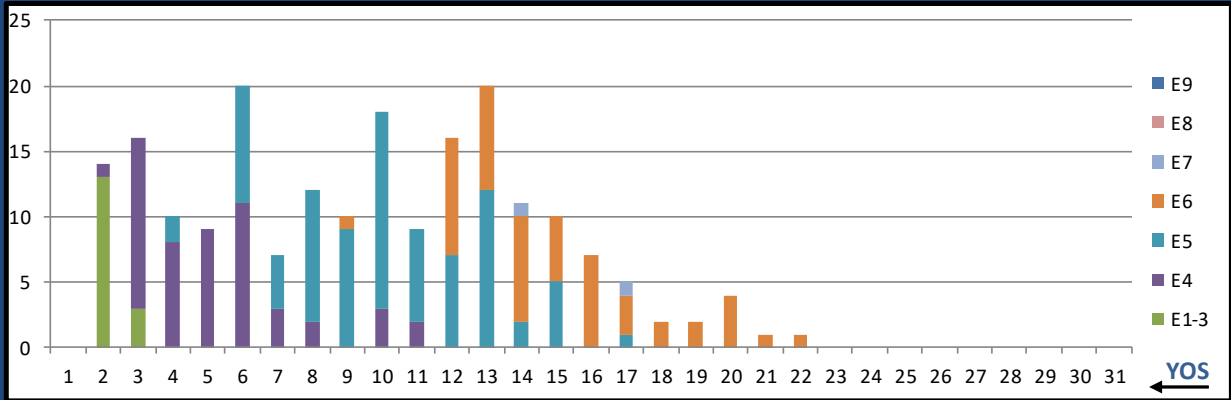
MARCH 2024 HM MANNING SNAPSHOT

L19A OPTICIAN



	E1-3	E4	E5	E6	E7	E8	E9	Total
%INV to BA	43%	117%	67%	88%	67%	0%	0%	81%
BA	30	46	55	26	3	-	-	160
Total Inventory	13	54	37	23	2	-	-	129
SJA Inventory	88%		74%		67%			

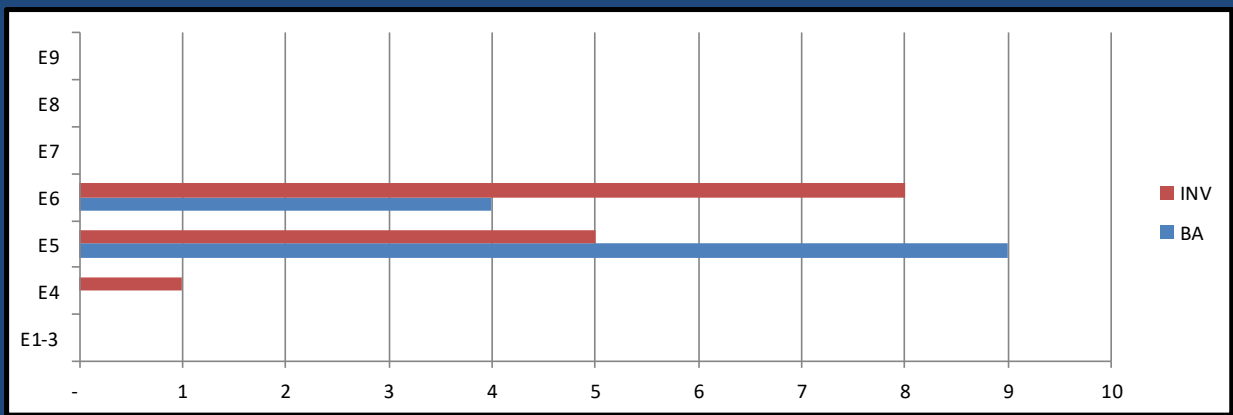
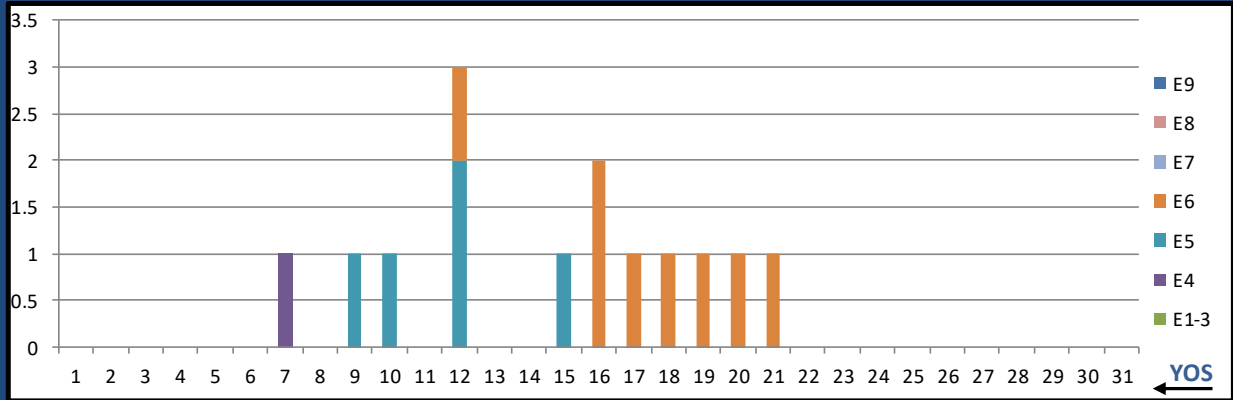
L20A PT TECH



	E1-3	E4	E5	E6	E7	E8	E9	Total
%INV to BA	80%	68%	115%	176%	0%	0%	0%	103%
BA	20	77	72	29	-	-	-	198
Total Inventory	16	52	83	51	2	-	-	204
SJA Inventory	70%		133%		#DIV/0!			

MARCH 2024 HM MANNING SNAPSHOT

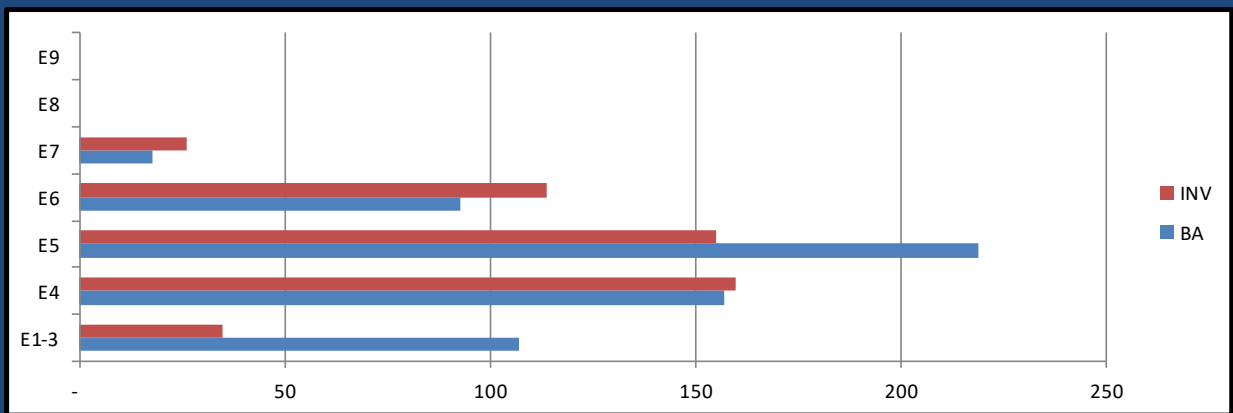
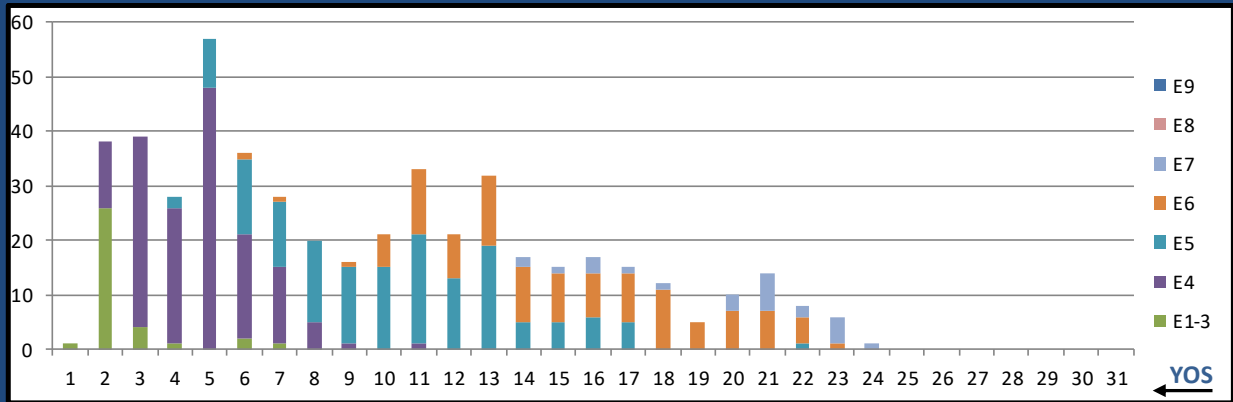
L21A OT TECH



	E1-3	E4	E5	E6	E7	E8	E9	Total
%INV to BA	0%	0%	56%	200%	0%	0%	0%	108%
BA	-	-	9	4	-	-	-	13
Total Inventory	-	1	5	8	-	-	-	14
SJA Inventory	#DIV/0!		100%			#DIV/0!		

MARCH 2024 HM MANNING SNAPSHOT

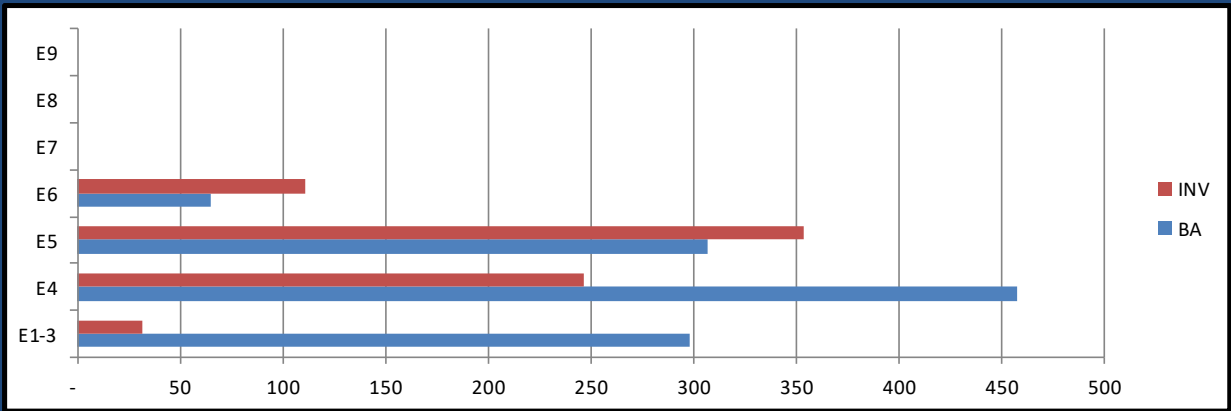
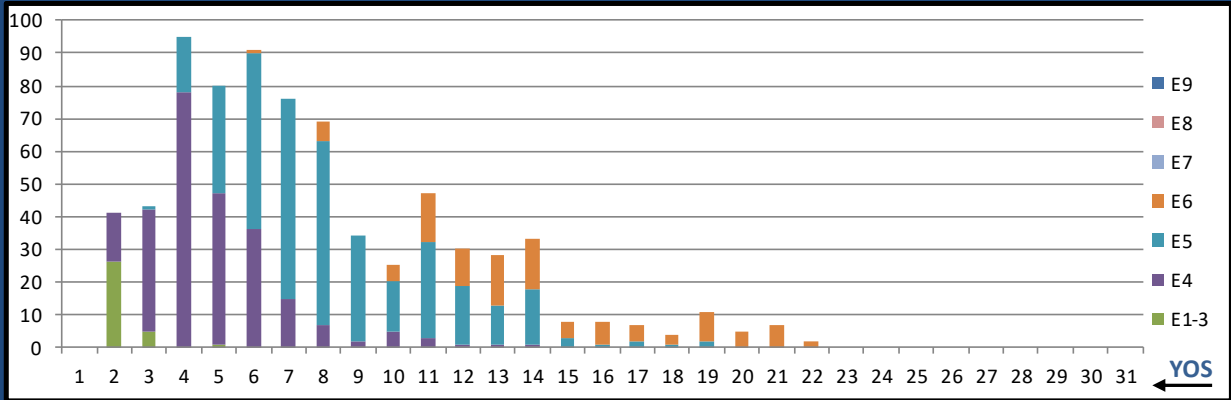
L22A PHARM TECH



	E1-3	E4	E5	E6	E7	E8	E9	Total
%INV to BA	33%	102%	71%	123%	144%	0%	0%	82%
BA	107	157	219	93	18	-	-	594
Total Inventory	35	160	155	114	26	-	-	490
SJA Inventory	74%		86%		144%			

MARCH 2024 HM MANNING SNAPSHOT

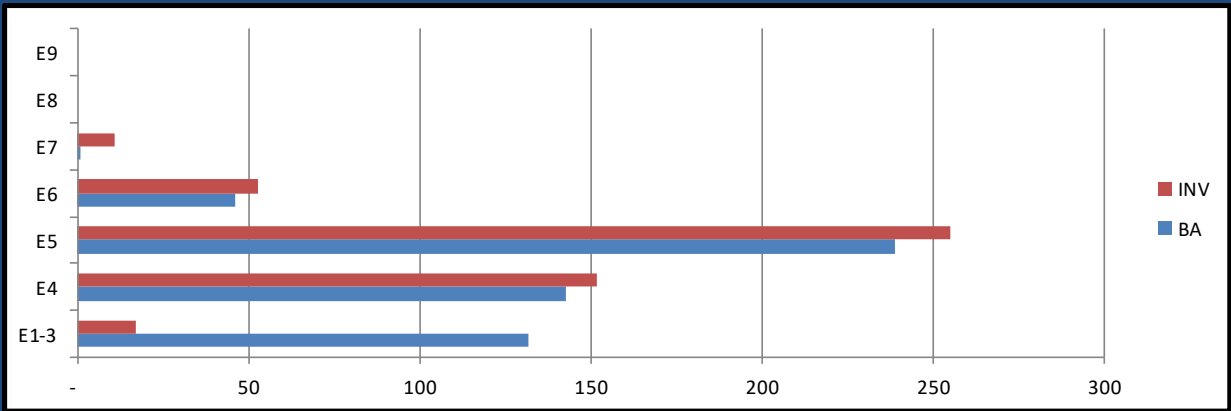
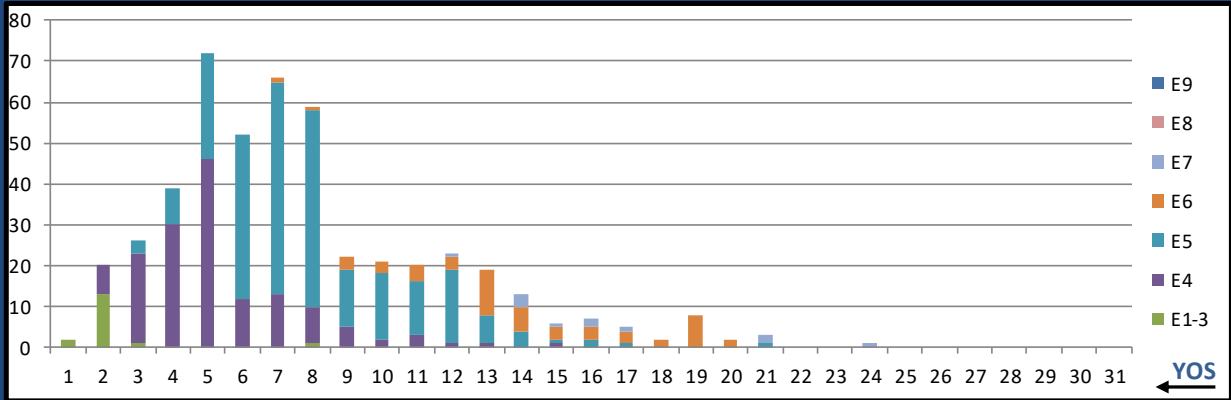
L23A SURG TECH



	E1-3	E4	E5	E6	E7	E8	E9	Total
%INV to BA	11%	54%	115%	171%	0%	0%	0%	66%
BA	298	458	307	65	-	-	-	1,128
Total Inventory	32	247	354	111	-	-	-	744
SJA Inventory	37%		125%		#DIV/0!			

MARCH 2024 HM MANNING SNAPSHOT

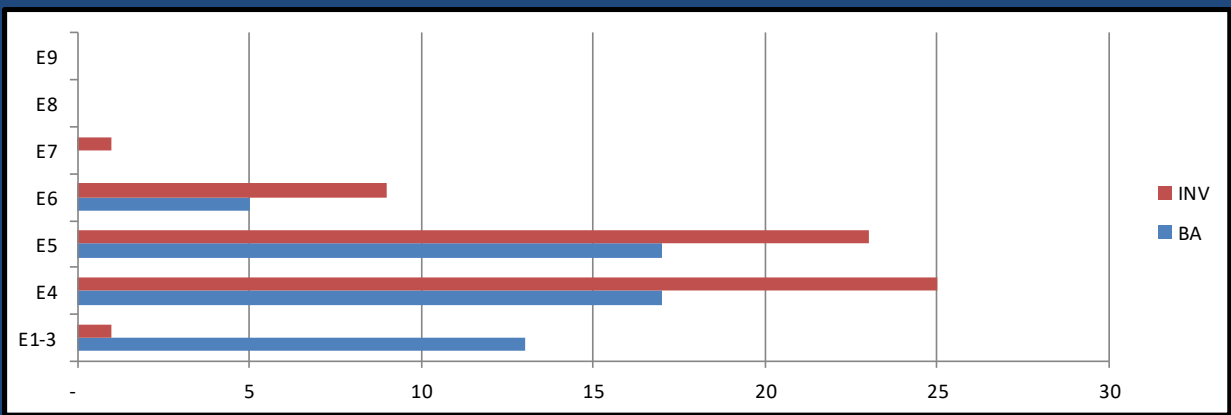
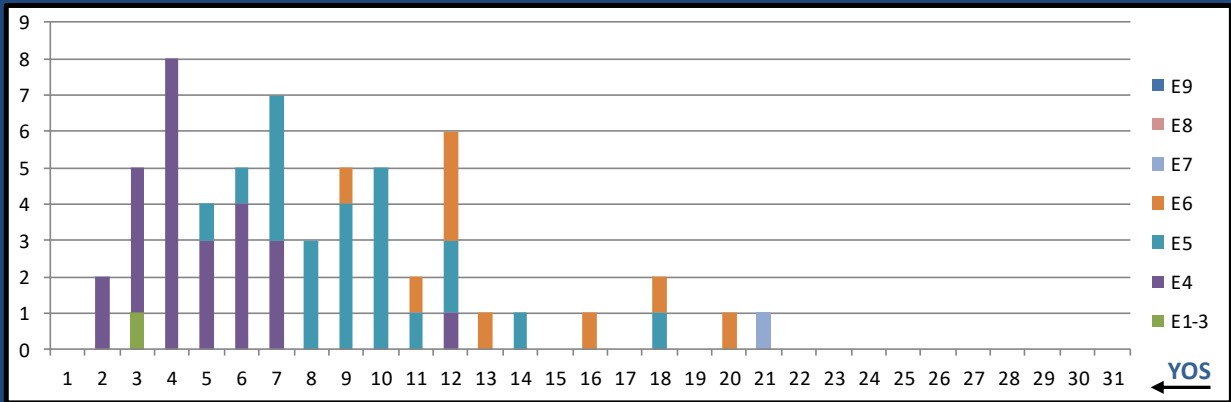
L24A BEHAV HLTH



	E1-3	E4	E5	E6	E7	E8	E9	Total
%INV to BA	13%	106%	107%	115%	1100%	0%	0%	87%
BA	132	143	239	46	1	-	-	561
Total Inventory	17	152	255	53	11	-	-	488
SJA Inventory	61%		108%		1100%			

MARCH 2024 HM MANNING SNAPSHOT

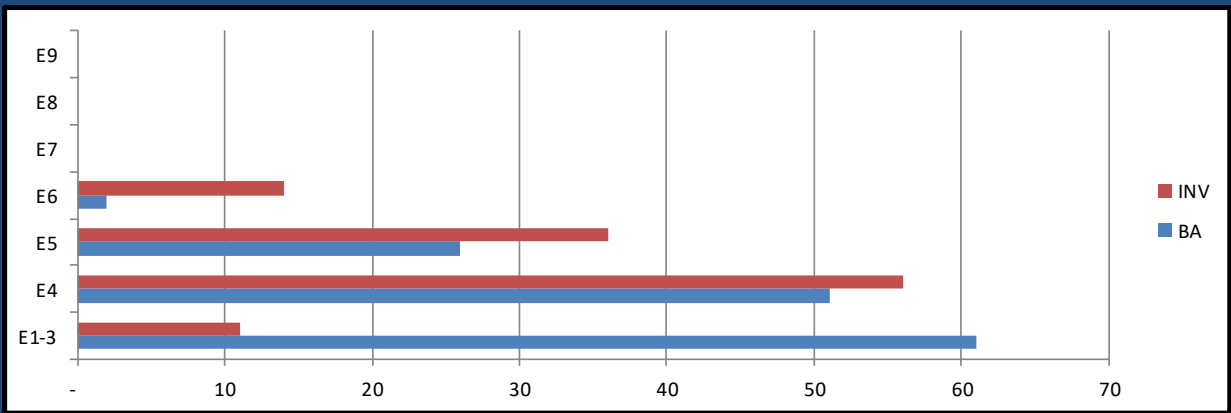
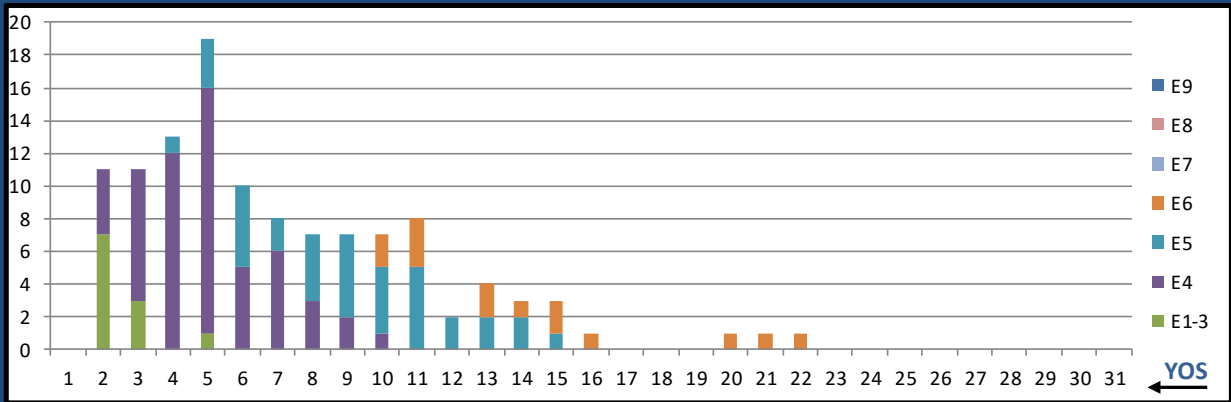
L25A UROLOGY TECH



	E1-3	E4	E5	E6	E7	E8	E9	Total
%INV to BA	8%	147%	135%	180%	0%	0%	0%	113%
BA	13	17	17	5	-	-	-	52
Total Inventory	1	25	23	9	1	-	-	59
SJA Inventory	87%		145%		#DIV/0!			

MARCH 2024 HM MANNING SNAPSHOT

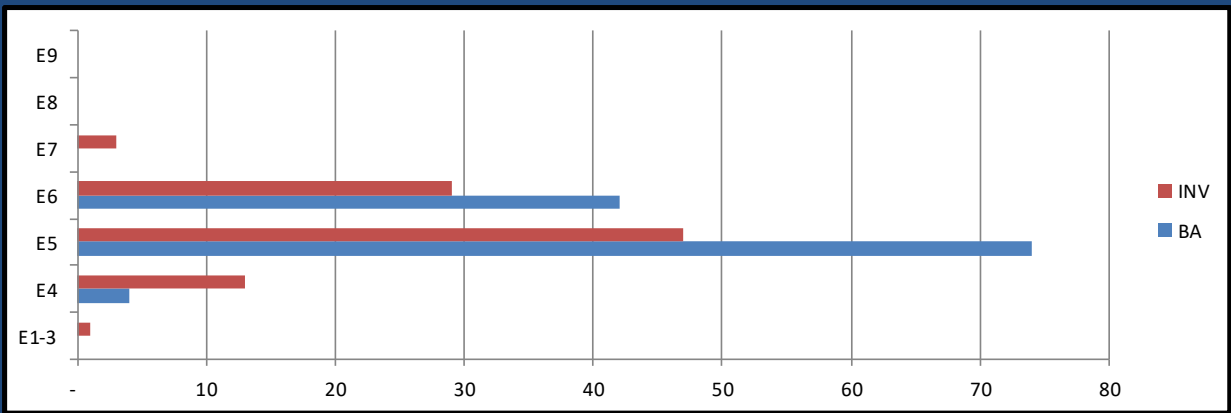
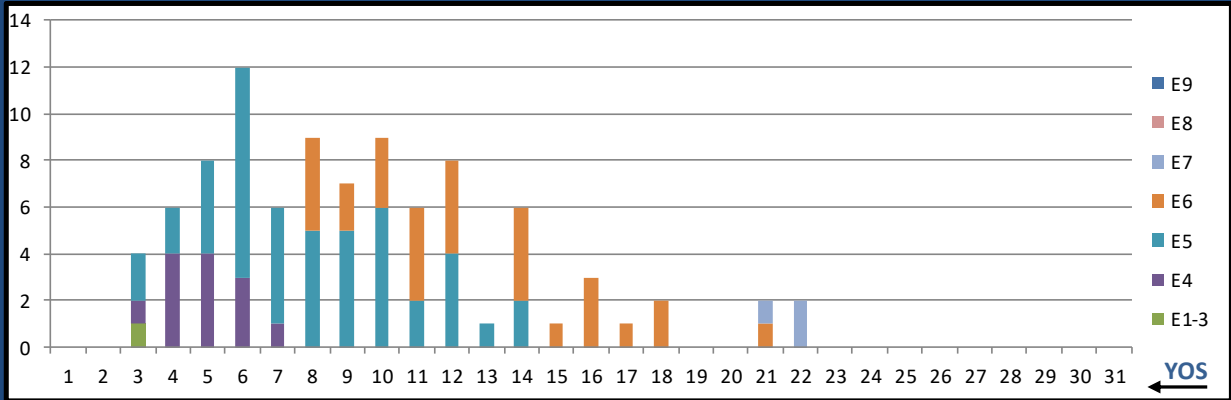
L26A ORTHOPEDIC TECH



	E1-3	E4	E5	E6	E7	E8	E9	Total
%INV to BA	18%	110%	138%	700%	0%	0%	0%	84%
BA	61	51	26	2	-	-	-	140
Total Inventory	11	56	36	14	-	-	-	117
SJA Inventory	60%		179%		#DIV/0!			

MARCH 2024 HM MANNING SNAPSHOT

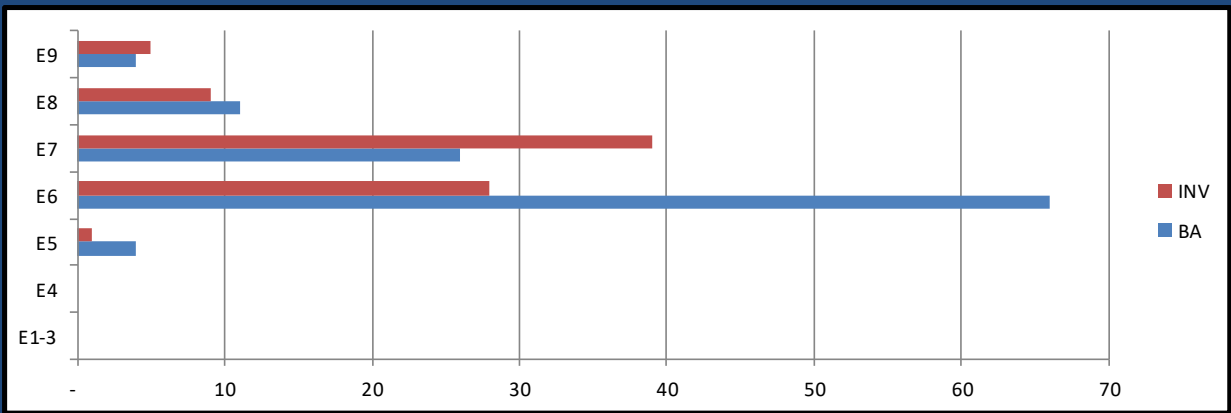
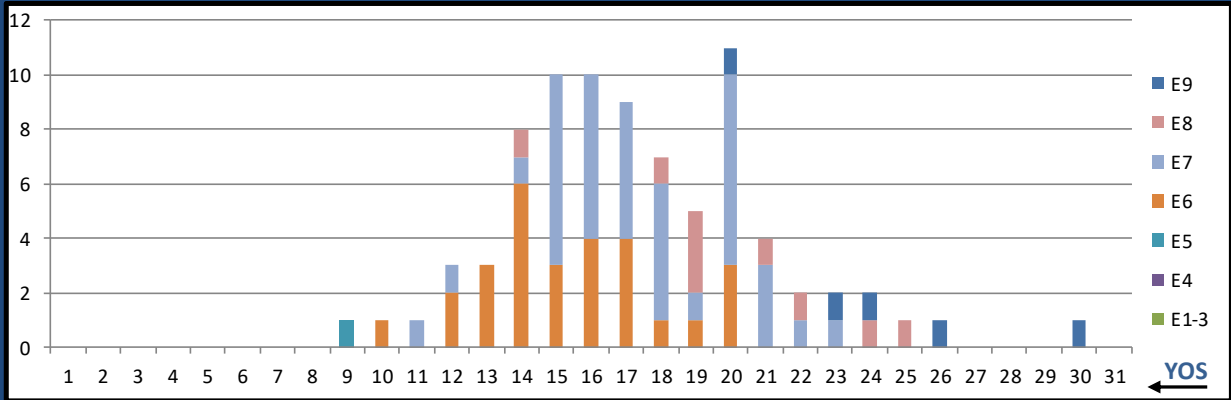
L27A DIVE MED TECH



	E1-3	E4	E5	E6	E7	E8	E9	Total
%INV to BA	0%	325%	64%	69%	0%	0%	0%	78%
BA	-	4	74	42	-	-	-	120
Total Inventory	1	13	47	29	3	-	-	93
SJA Inventory	350%		66%		#DIV/0!			

MARCH 2024 HM MANNING SNAPSHOT

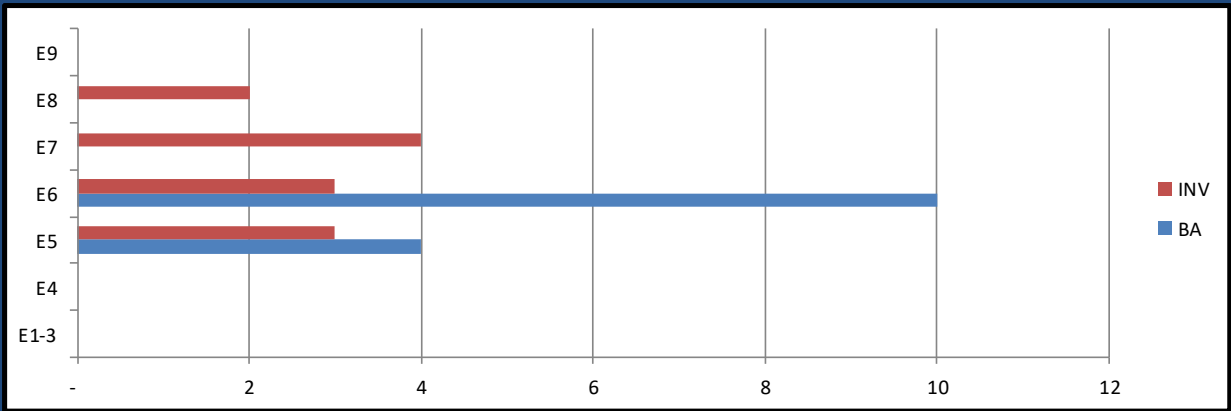
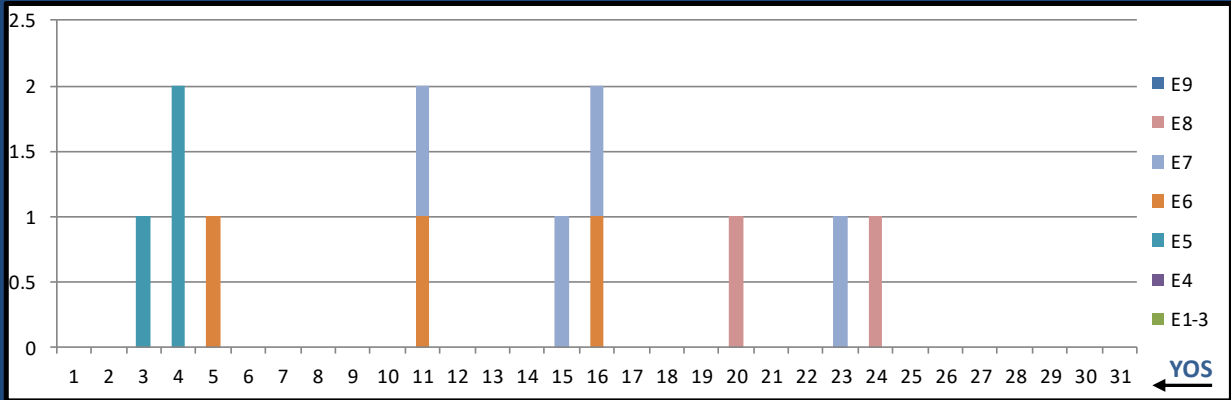
L28A DIVE IDC



	E1-3	E4	E5	E6	E7	E8	E9	Total
%INV to BA	0%	0%	25%	42%	150%	82%	125%	74%
BA	-	-	4	66	26	11	4	111
Total Inventory	-	-	1	28	39	9	5	82
SJA Inventory	#DIV/0!		41%		129%			

MARCH 2024 HM MANNING SNAPSHOT

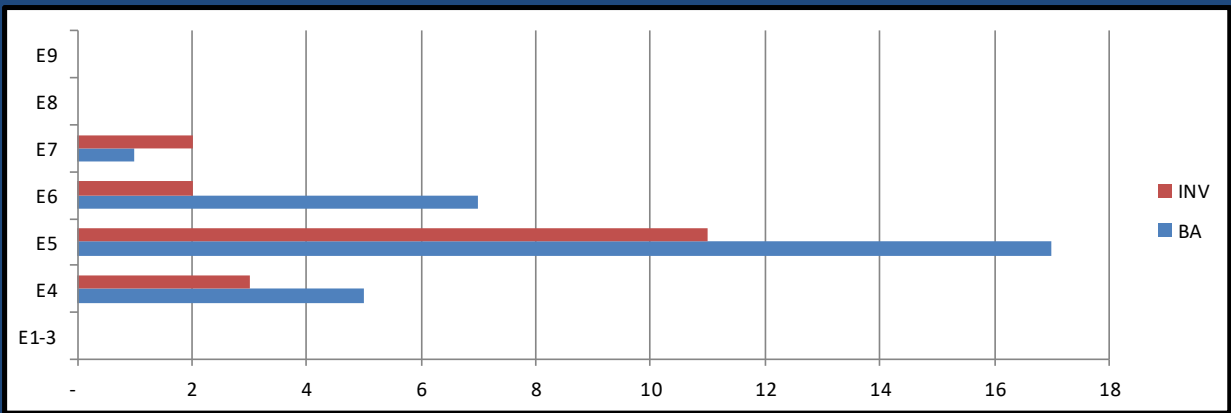
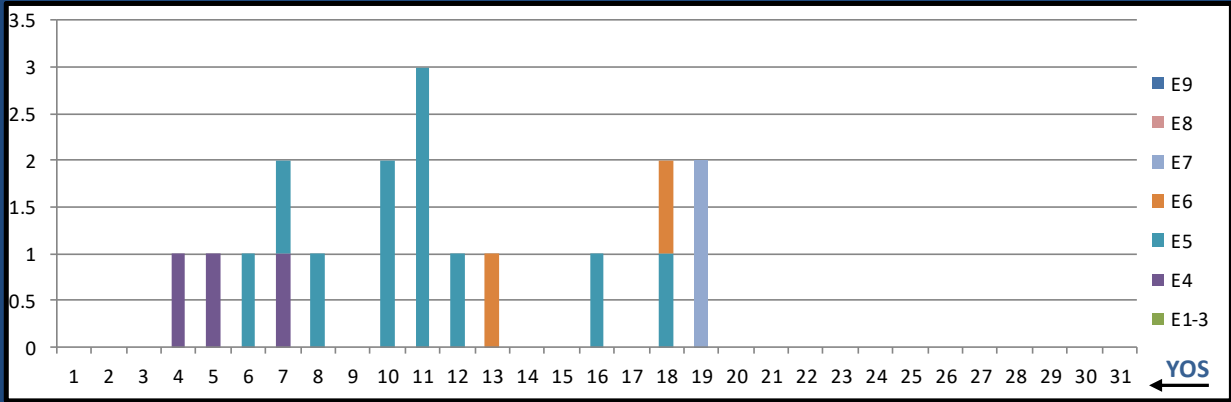
L29A MORTICIAN



	E1-3	E4	E5	E6	E7	E8	E9	Total
%INV to BA	0%	0%	75%	30%	0%	0%	0%	86%
BA	-	-	4	10	-	-	-	14
Total Inventory	-	-	3	3	4	2	-	12
SJA Inventory	#DIV/0!		43%		#DIV/0!			

MARCH 2024 HM MANNING SNAPSHOT

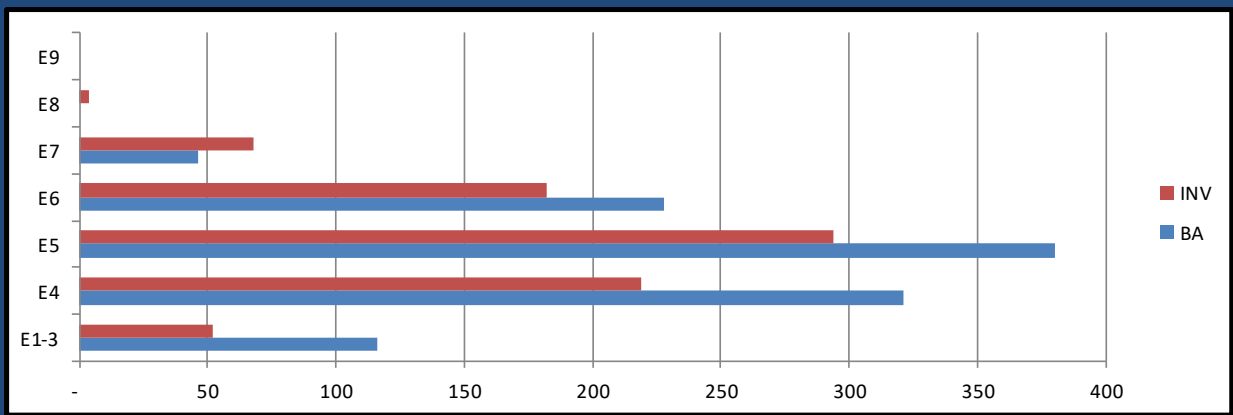
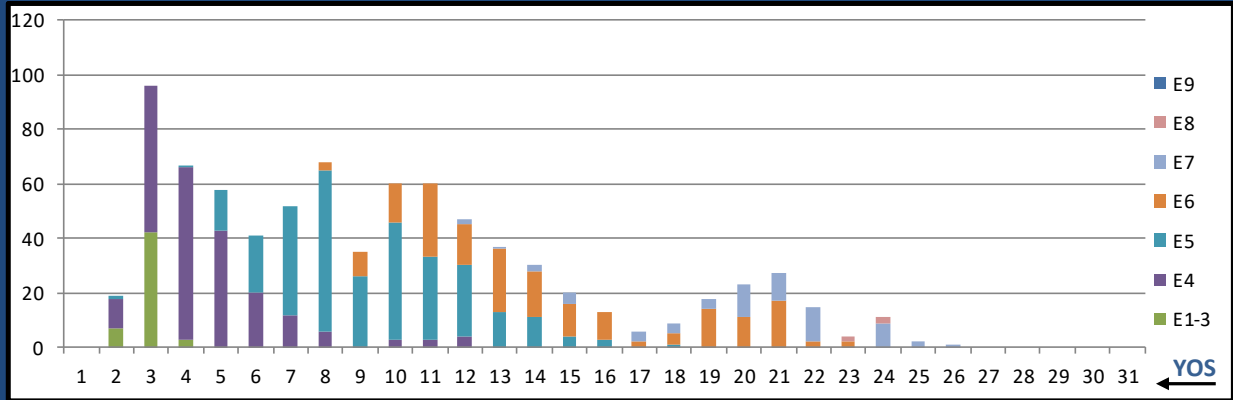
L30A HISTO TECH



	E1-3	E4	E5	E6	E7	E8	E9	Total
%INV to BA	0%	60%	65%	29%	200%	0%	0%	60%
BA	-	5	17	7	1	-	-	30
Total Inventory	-	3	11	2	2	-	-	18
SJA Inventory	60%		54%		200%			

MARCH 2024 HM MANNING SNAPSHOT

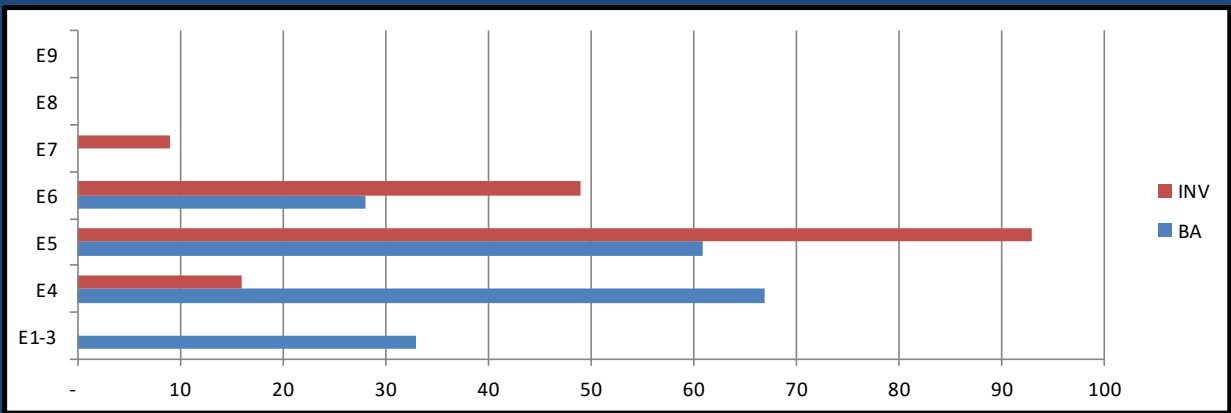
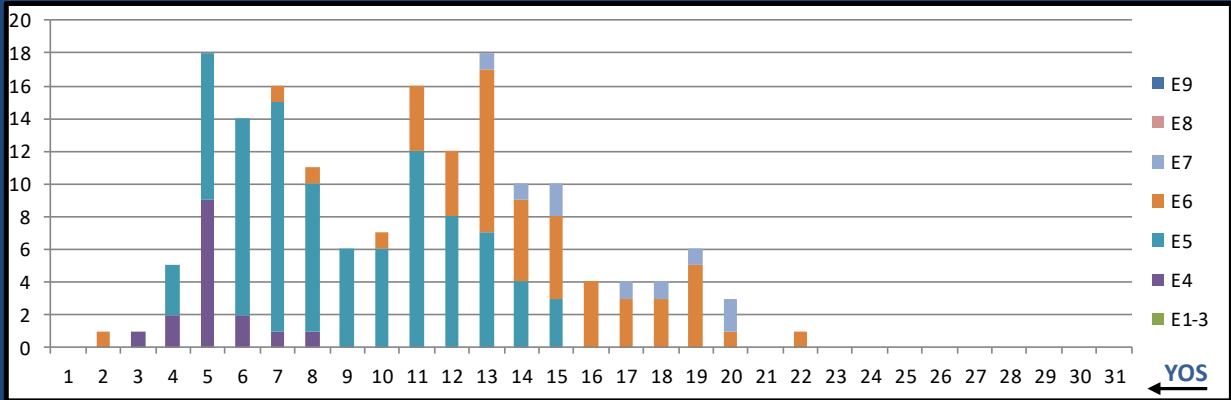
L31A MED LAB TECH



	E1-3	E4	E5	E6	E7	E8	E9	Total
%INV to BA	45%	68%	77%	80%	148%	0%	0%	75%
BA	116	321	380	228	46	-	-	1,091
Total Inventory	52	219	294	182	68	4	-	819
SJA Inventory	62%		78%		157%			

MARCH 2024 HM MANNING SNAPSHOT

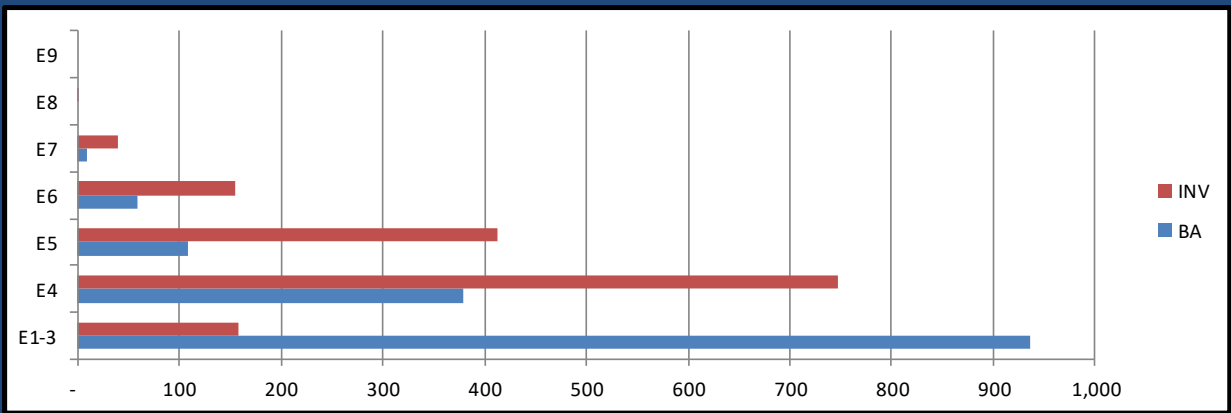
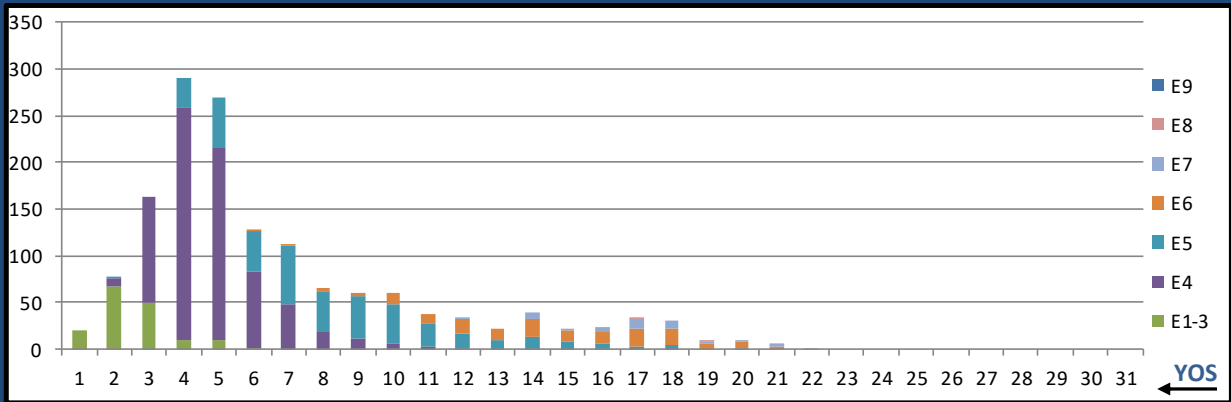
L32A RESP THER TECH



	E1-3	E4	E5	E6	E7	E8	E9	Total
%INV to BA	0%	24%	152%	175%	0%	0%	0%	88%
BA	33	67	61	28	-	-	-	189
Total Inventory	-	16	93	49	9	-	-	167
SJA Inventory	16%		160%		#DIV/0!			

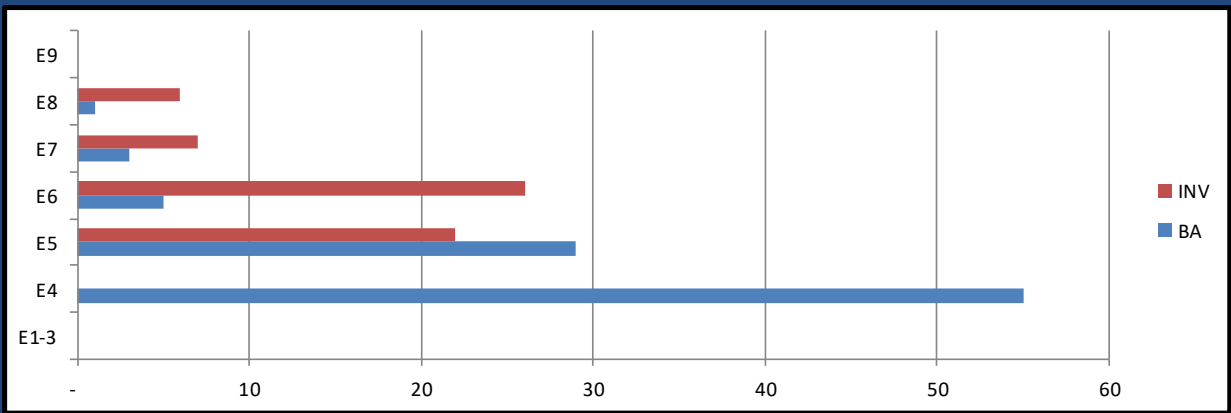
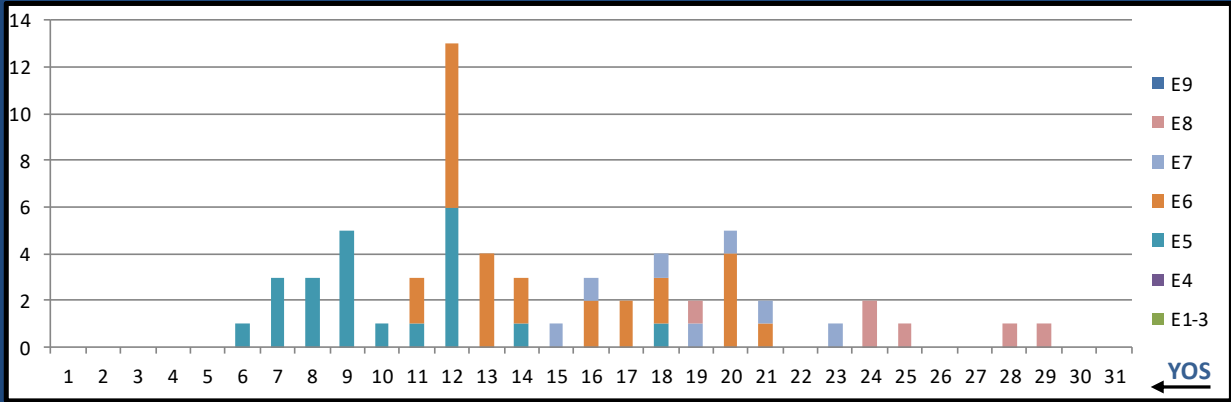
MARCH 2024 HM MANNING SNAPSHOT

L33A DENTAL ASSISTANT



	E1-3	E4	E5	E6	E7	E8	E9	Total
%INV to BA	17%	197%	382%	263%	400%	0%	0%	102%
BA	936	379	108	59	10	-	-	1,492
Total Inventory	159	747	413	155	40	2	-	1,516
SJA Inventory	69%		340%		420%			

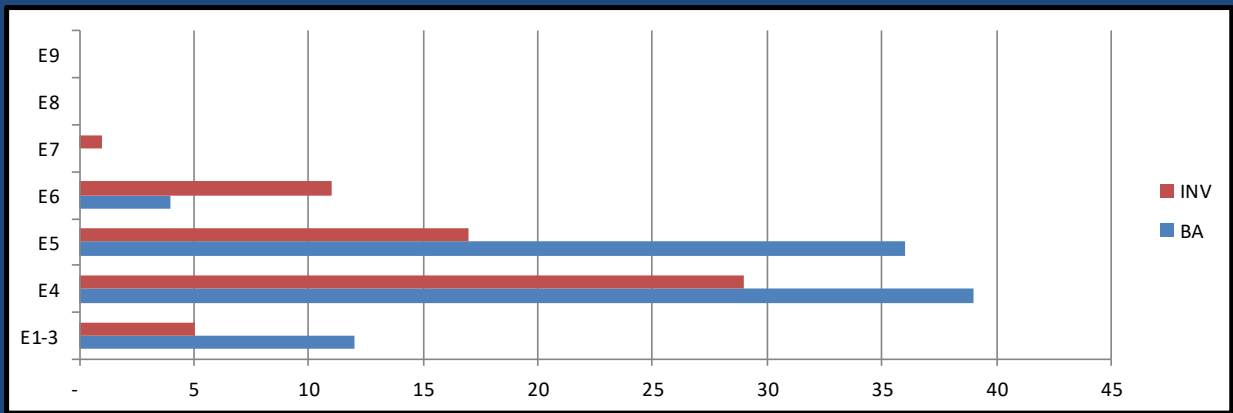
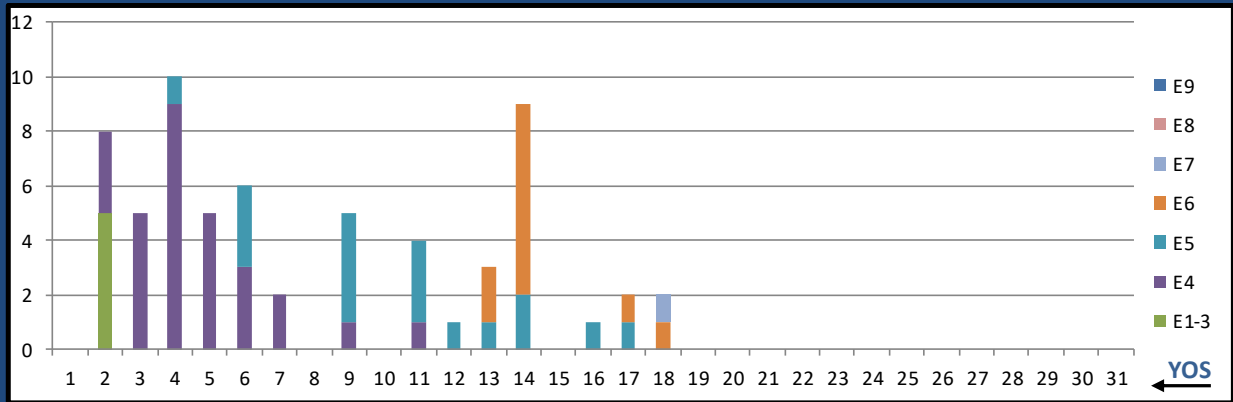
L35A DENTAL HYGIENIST



	E1-3	E4	E5	E6	E7	E8	E9	Total
%INV to BA	0%	0%	76%	520%	233%	600%	0%	66%
BA	-	55	29	5	3	1	-	93
Total Inventory	-	-	22	26	7	6	-	61
SJA Inventory	0%		141%		325%			

MARCH 2024 HM MANNING SNAPSHOT

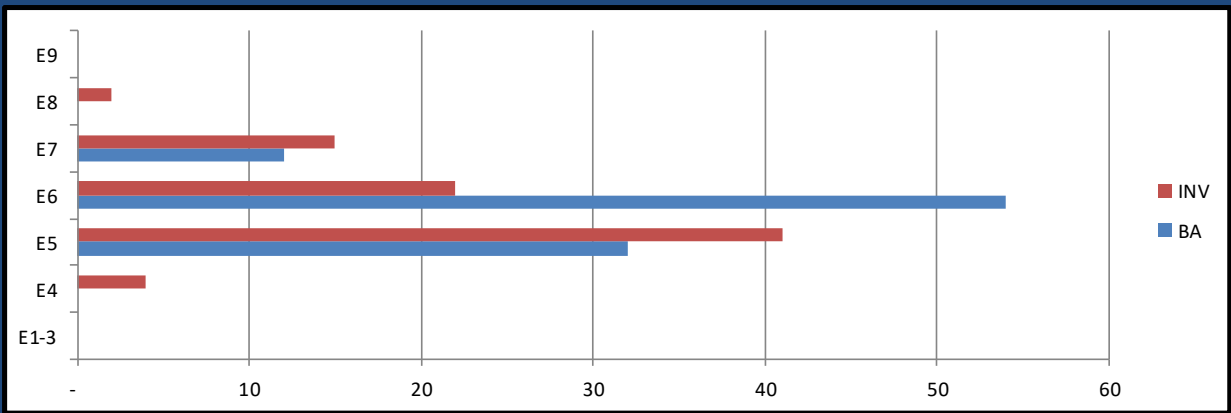
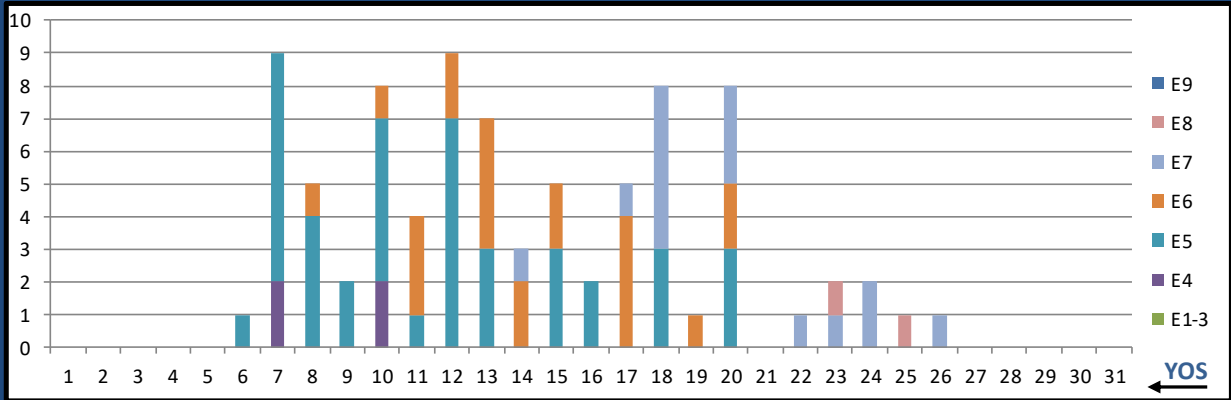
L36A DENTAL LAB BASIC



	E1-3	E4	E5	E6	E7	E8	E9	Total
%INV to BA	42%	74%	47%	275%	0%	0%	0%	69%
BA	12	39	36	4	-	-	-	91
Total Inventory	5	29	17	11	1	-	-	63
SJA Inventory	67%		70%		#DIV/0!			

MARCH 2024 HM MANNING SNAPSHOT

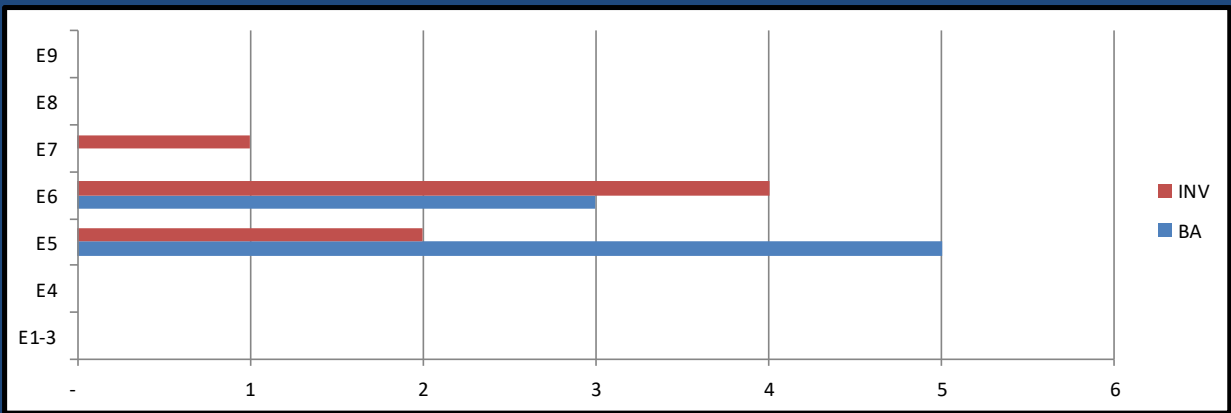
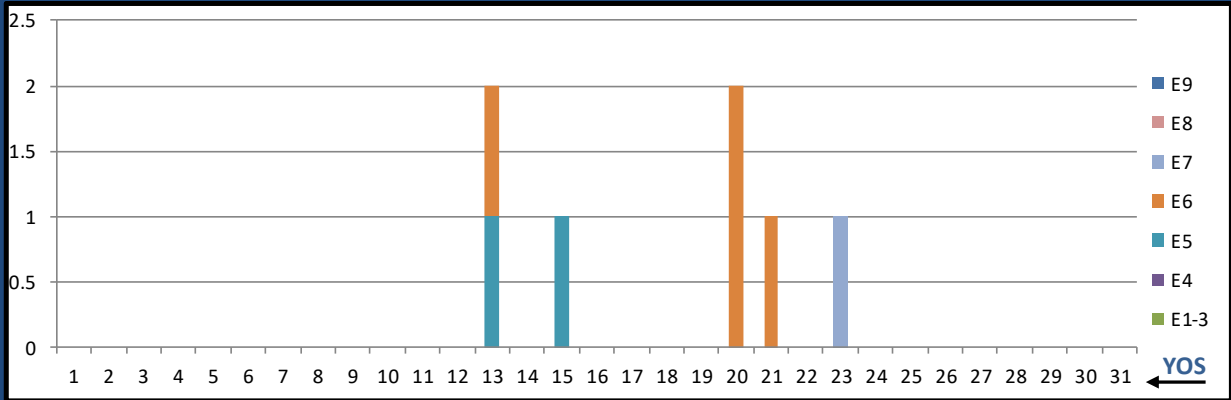
L37A DENTAL LAB ADV



	E1-3	E4	E5	E6	E7	E8	E9	Total
%INV to BA	0%	0%	128%	41%	125%	0%	0%	86%
BA	-	-	32	54	12	-	-	98
Total Inventory	-	4	41	22	15	2	-	84
SJA Inventory	#DIV/0!		73%		142%			

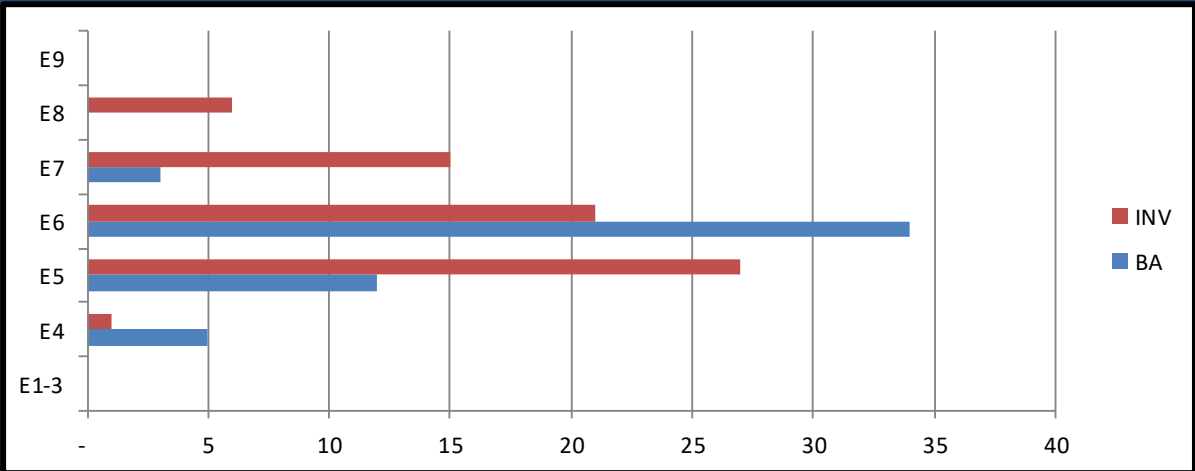
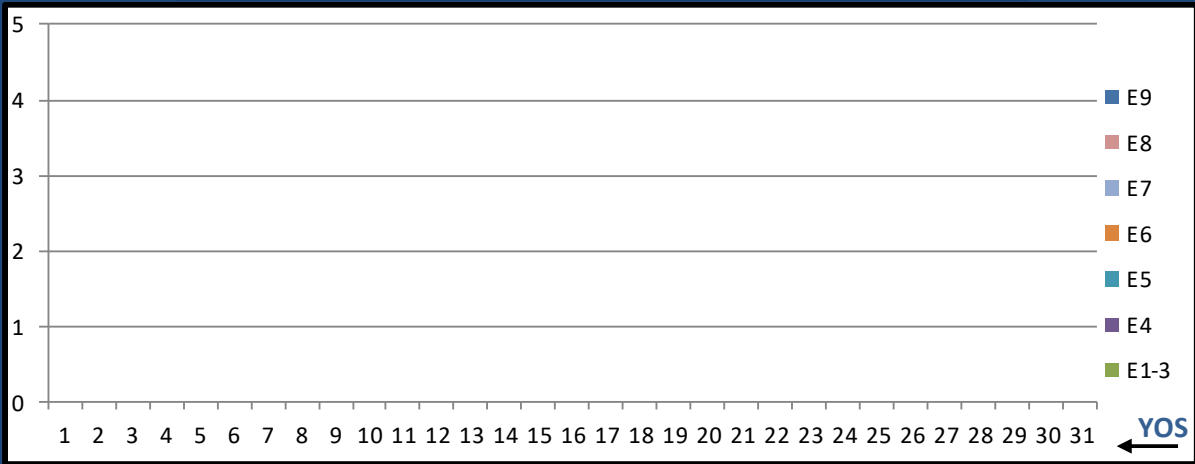
MARCH 2024 HM MANNING SNAPSHOT

L38A DENTAL ORALMAX



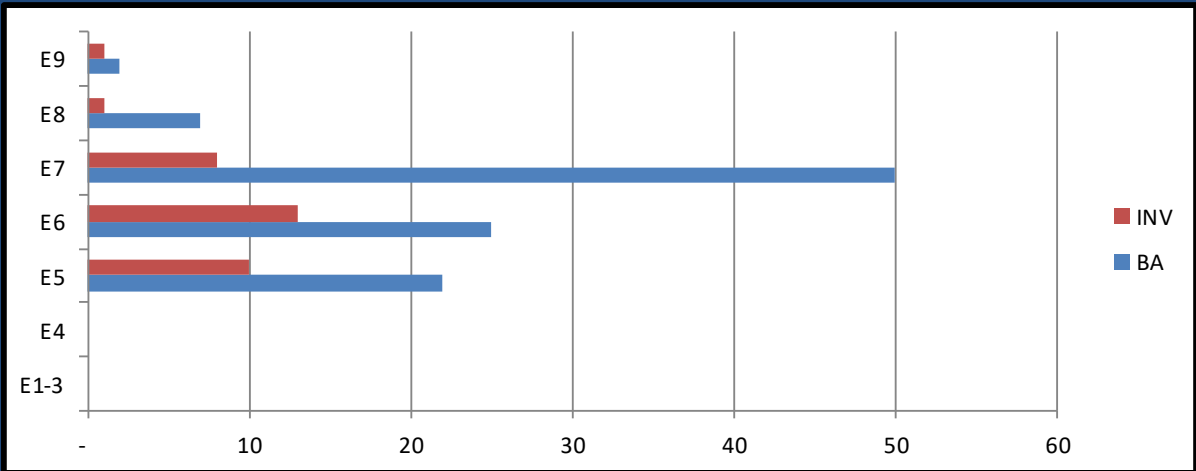
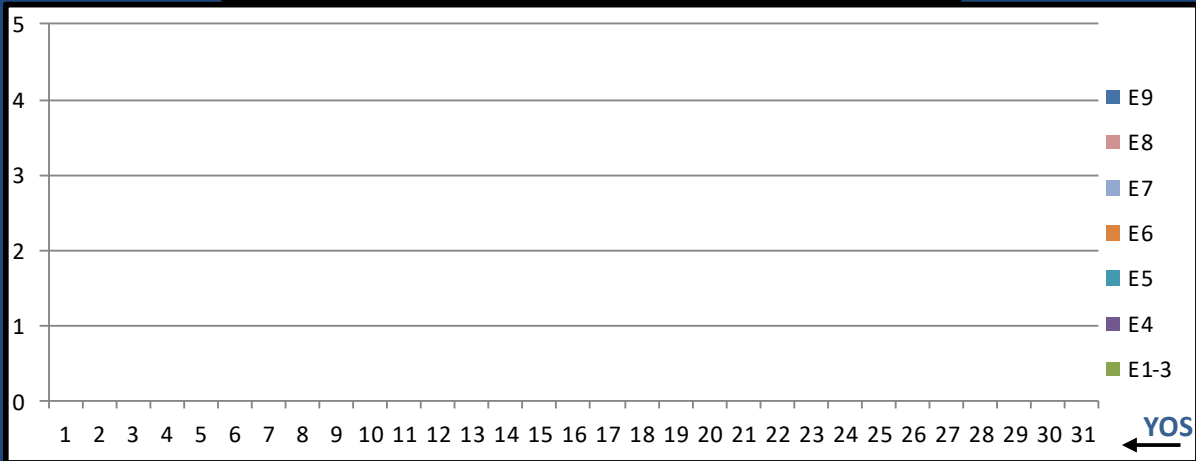
	E1-3	E4	E5	E6	E7	E8	E9	Total
%INV to BA	0%	0%	40%	133%	0%	0%	0%	88%
BA	-	-	5	3	-	-	-	8
Total Inventory	-	-	2	4	1	-	-	7
SJA Inventory	#DIV/0!		75%		#DIV/0!			

810B DRUG & ALCOHOL COUNSELOR INTERN



	E1-3	E4	E5	E6	E7	E8	E9	Total
%INV to BA	0%	20%	225%	62%	500%	0%	0%	130%
BA	-	5	12	34	3	-	-	54
Total Inventory	-	1	27	21	15	6	-	70
SJA Inventory	20%		104%		700%			

810C DRUG & ALCOHOL COUNSELOR



	E1-3	E4	E5	E6	E7	E8	E9	Total
%INV to BA	0%	0%	45%	52%	16%	14%	50%	31%
BA	-	-	22	25	50	7	2	106
Total Inventory	-	-	10	13	8	1	1	33
SJA Inventory	#DIV/0!		49%		17%			

MARCH 2024 HM MANNING SNAPSHOT

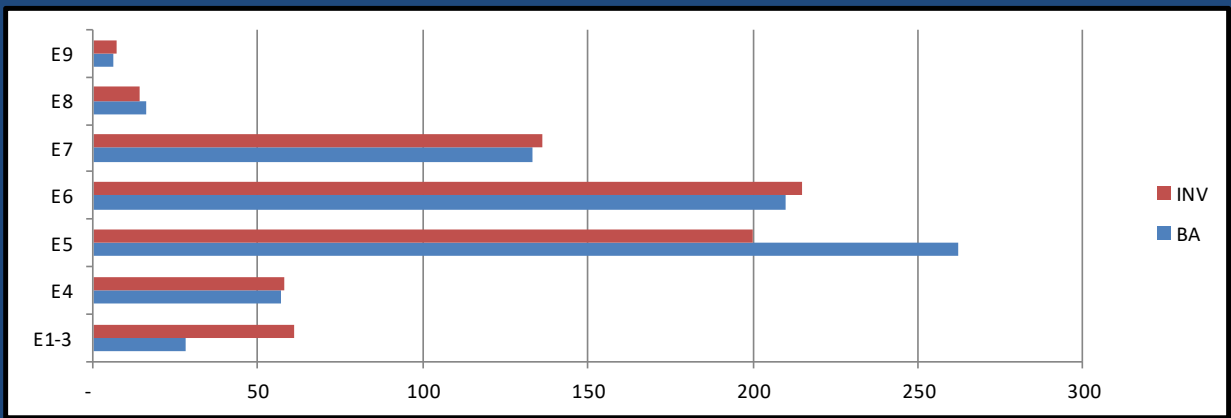
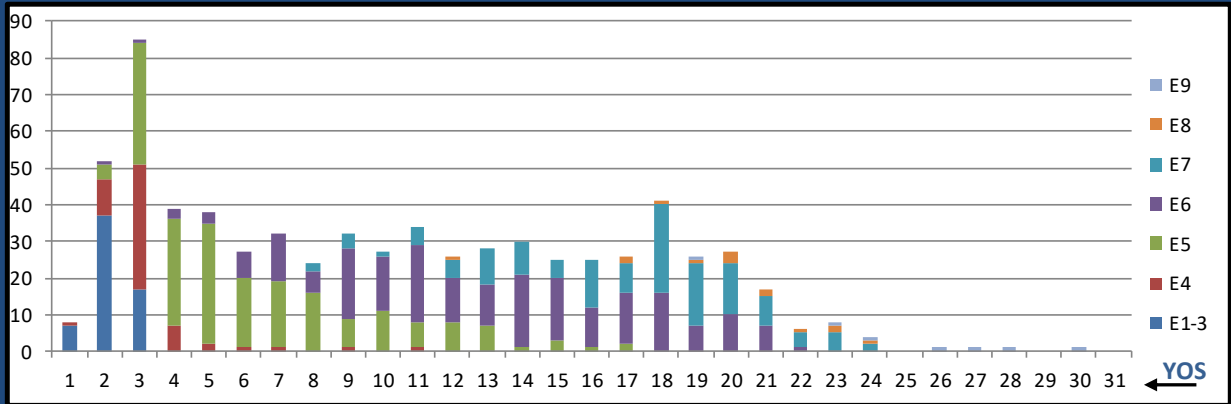
HM TAR MANNING 05 MARCH 2024	NEC	BA	INV WITH PRIMARY NEC	INV/BA PRIMARY NEC	TOTAL INV W/NEC	TOTAL NEC INV/BA
FIELD MED TECH	L03A	181	233	128.7%	275	151.9%
AERO MED TECH	L04A	41	87	212.2%	87	212.2%
SURFACE IDC	L10A	27	23	85.2%	23	85.2%
PREV MED TECH	L12A	1	3	300.0%	3	300.0%
PT TECH	L20A	0	0	#DIV/0!	0	#DIV/0!
PHARM TECH	L22A	0	1	#DIV/0!	1	#DIV/0!
DENTAL ASSISTANT	L33A	0	2	#DIV/0!	2	#DIV/0!
DRUG & ALCOHOL COUNS. INTERN	810B	1	0	0.0%	0	0.0%

General Duty HM	0000/L03A	643	577	89.7%
NECS (less L03A)	NEC	69	114	165.2%
NOS L500 TOTAL	ALL	712	691	97.1%

Critically Undermanned <85% Undermanned 85%-94% Healthy 95%-104% Overmanned >105%

MARCH 2024 HM MANNING SNAPSHOT

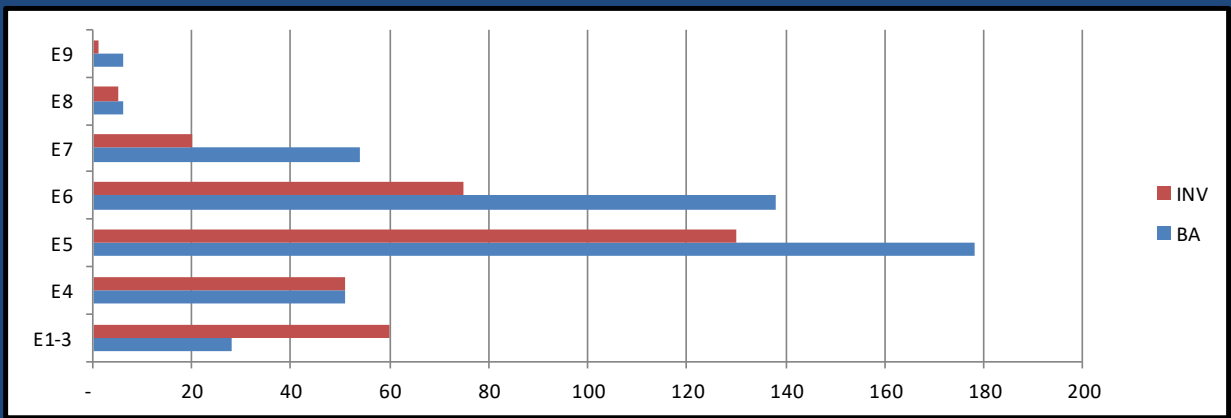
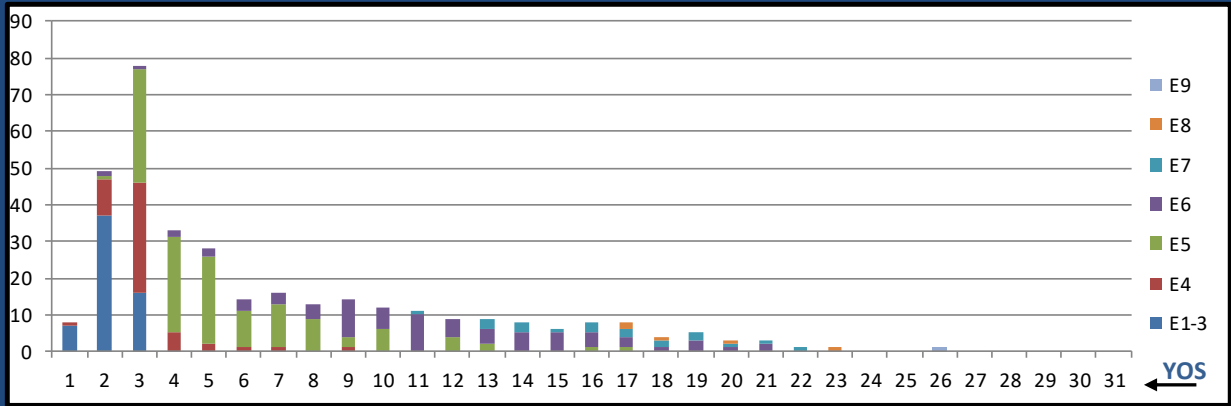
TAR ALL



	E1-3	E4	E5	E6	E7	E8	E9	Total
%INV to BA	218%	102%	76%	102%	102%	88%	117%	97%
BA	28	57	262	210	133	16	6	712
Total Inventory	61	58	200	215	136	14	7	691
SJA Inventory	140%		88%		101%			

MARCH 2024 HM MANNING SNAPSHOT

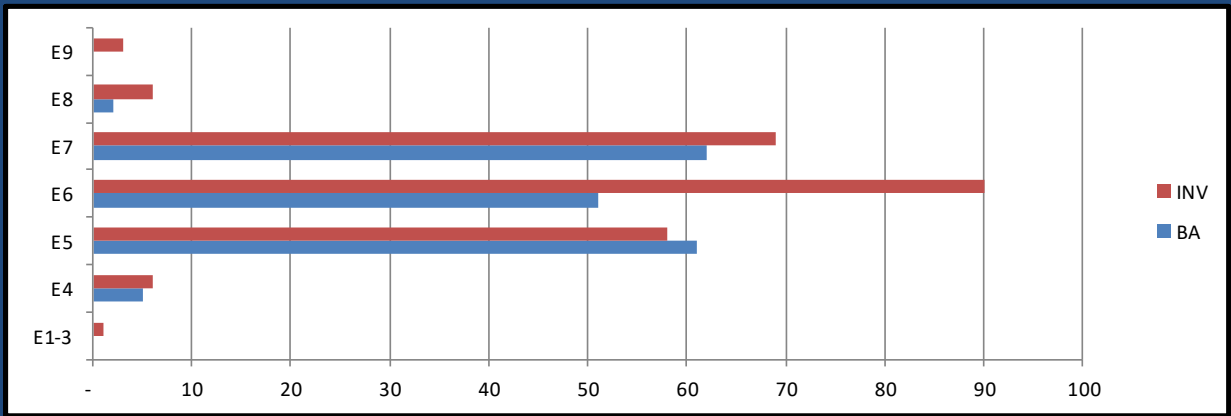
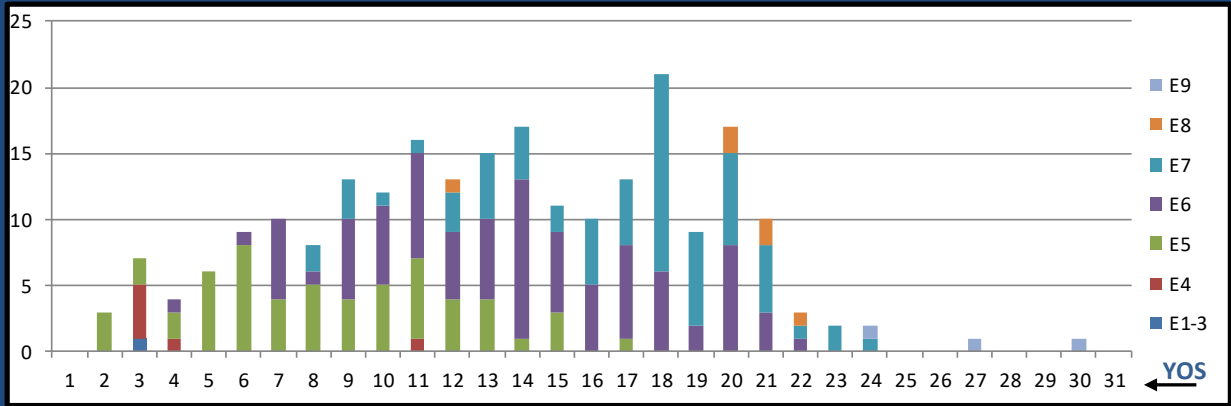
TAR 0000



	E1-3	E4	E5	E6	E7	E8	E9	Total
%INV to BA	214%	100%	73%	54%	37%	83%	17%	74%
BA	28	51	178	138	54	6	6	461
Total Inventory	60	51	130	75	20	5	1	342
SJA Inventory	141%		65%		39%			

MARCH 2024 HM MANNING SNAPSHOT

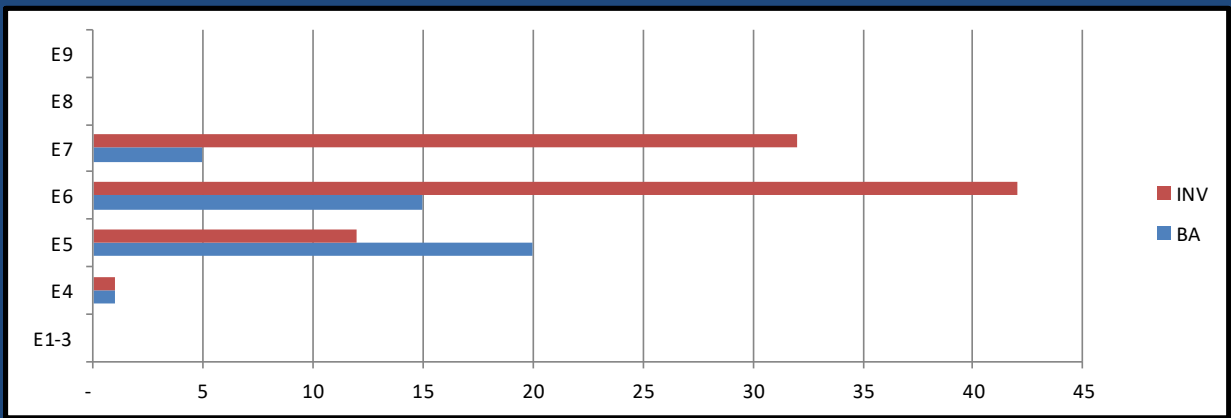
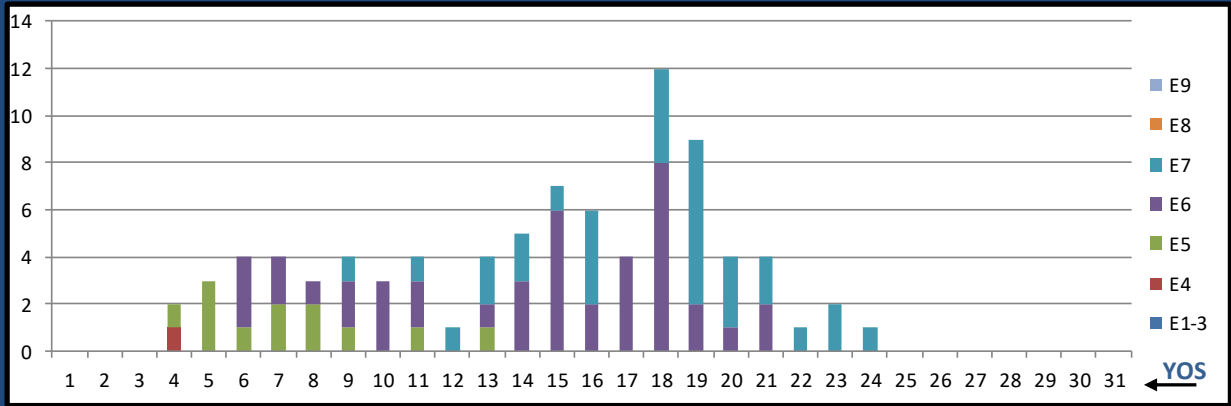
TAR L03A FLD MED TECH



	E1-3	E4	E5	E6	E7	E8	E9	Total
%INV to BA	0%	120%	95%	176%	111%	300%	0%	129%
BA	-	5	61	51	62	2	-	181
Total Inventory	1	6	58	90	69	6	3	233
SJA Inventory	140%		132%		122%			

MARCH 2024 HM MANNING SNAPSHOT

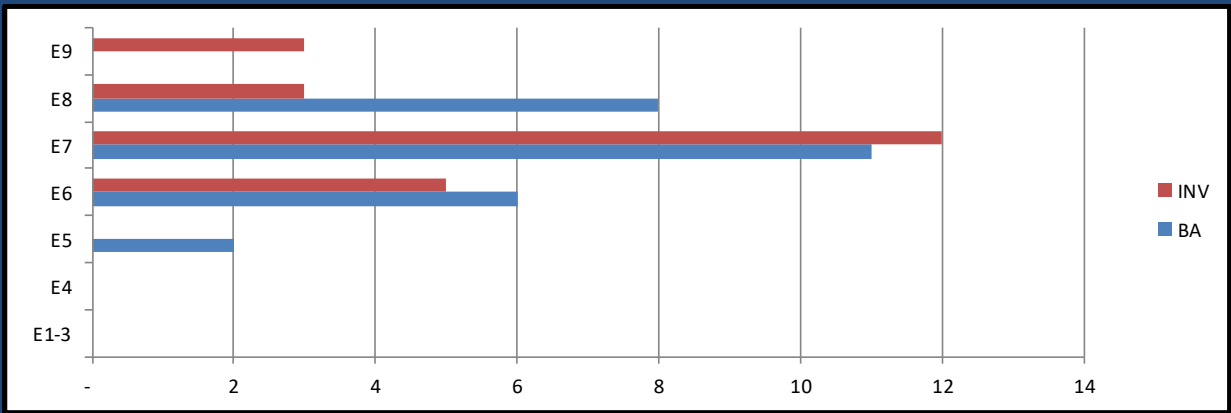
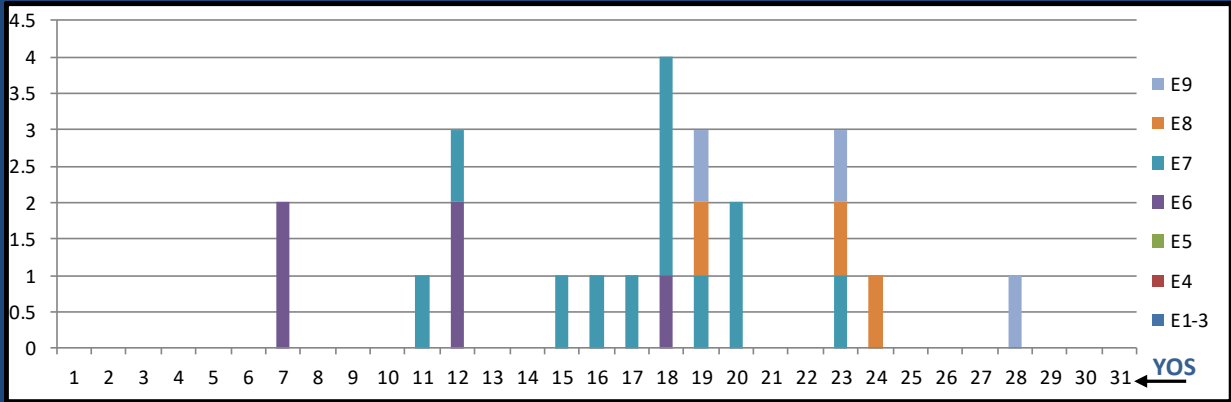
TAR L04A AERO MED TECH



	E1-3	E4	E5	E6	E7	E8	E9	Total
%INV to BA	0%	100%	60%	280%	640%	0%	0%	212%
BA	-	1	20	15	5	-	-	41
Total Inventory	-	1	12	42	32	-	-	87
SJA Inventory	100%		154%		640%			

MARCH 2024 HM MANNING SNAPSHOT

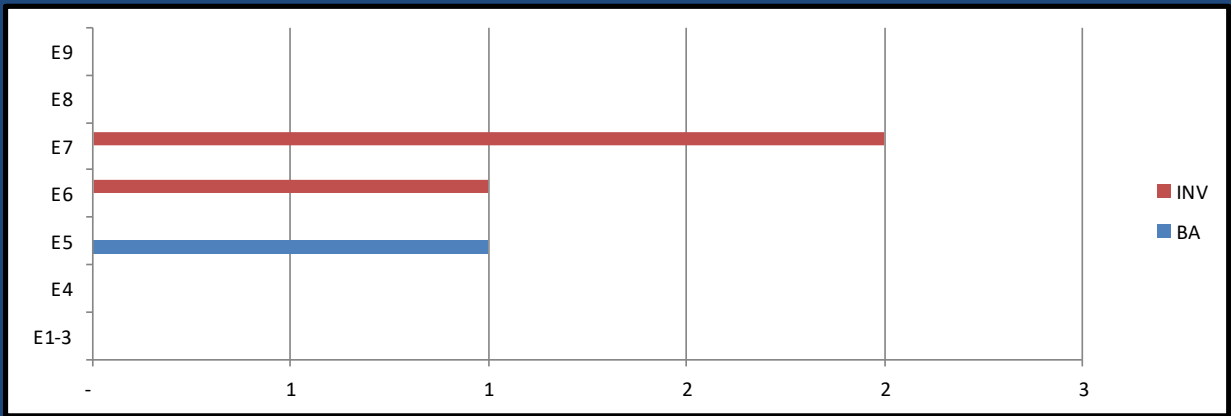
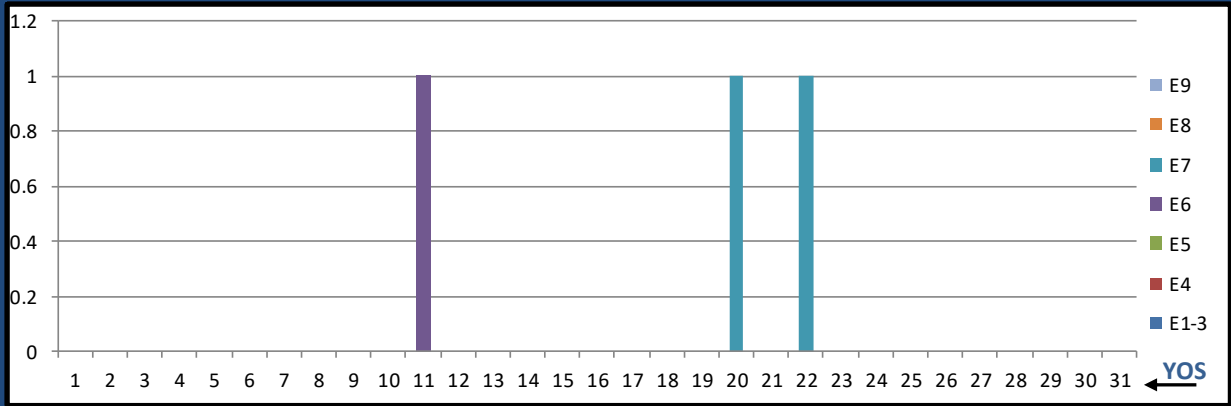
TAR L10A SURFACE FORCE IDC



	E1-3	E4	E5	E6	E7	E8	E9	Total
%INV to BA	0%	0%	0%	83%	109%	38%	0%	85%
BA	-	-	2	6	11	8	-	27
Total Inventory	-	-	-	5	12	3	3	23
SJA Inventory	#DIV/0!		63%		95%			

MARCH 2024 HM MANNING SNAPSHOT

TAR L12A PREV MED TECH



	E1-3	E4	E5	E6	E7	E8	E9	Total
%INV to BA	0%	0%	0%	0%	0%	0%	0%	300%
BA	-	-	1	-	-	-	-	1
Total Inventory	-	-	-	1	2	-	-	3
SJA Inventory	#DIV/0!		100%		#DIV/0!			